

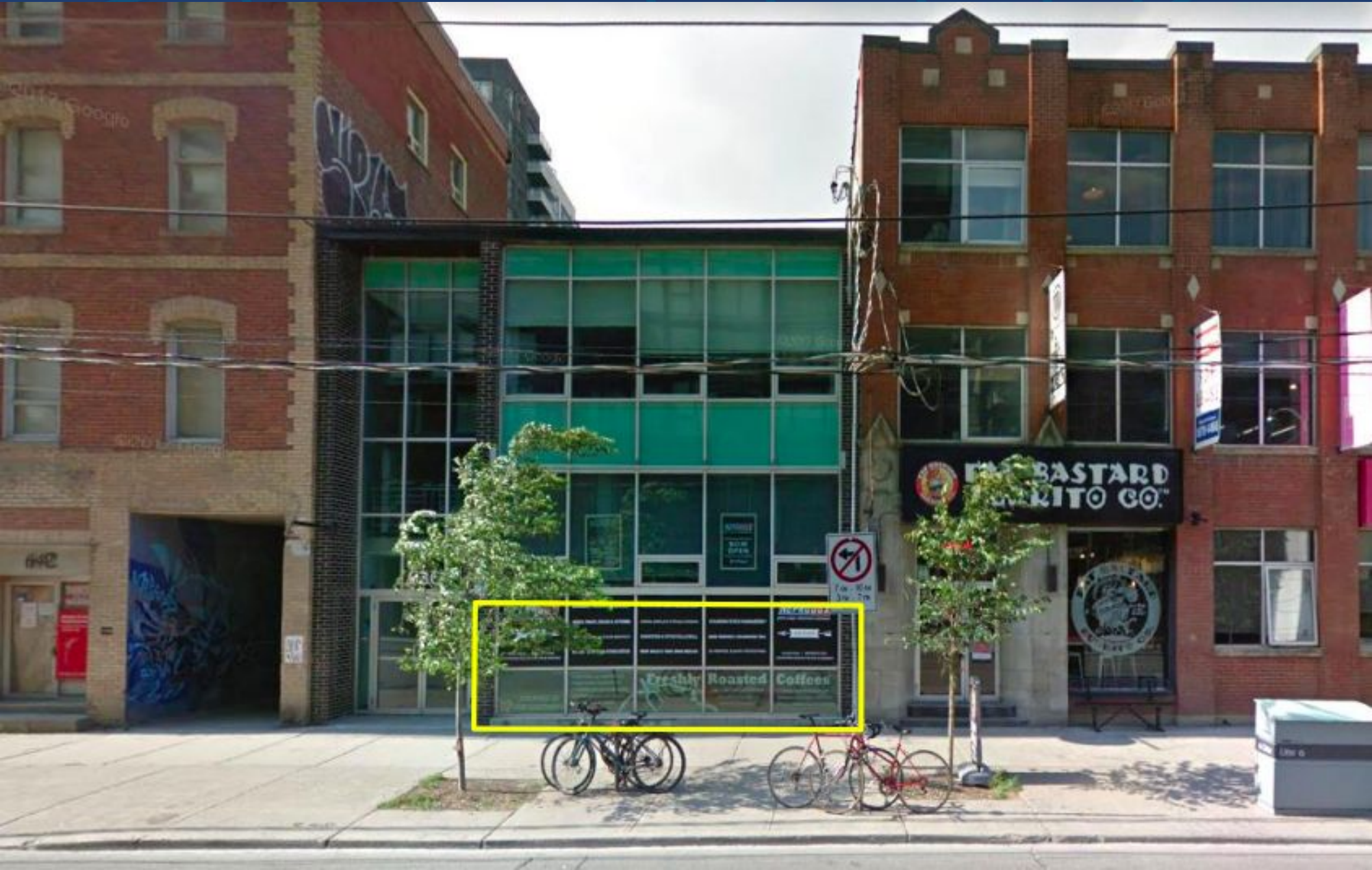
FOR LEASE | LOWER LEVEL OFFICE SPACE

# 636 KING STREET WEST

TORONTO | ON



METROPOLITAN  
COMMERCIAL





## DETAILS

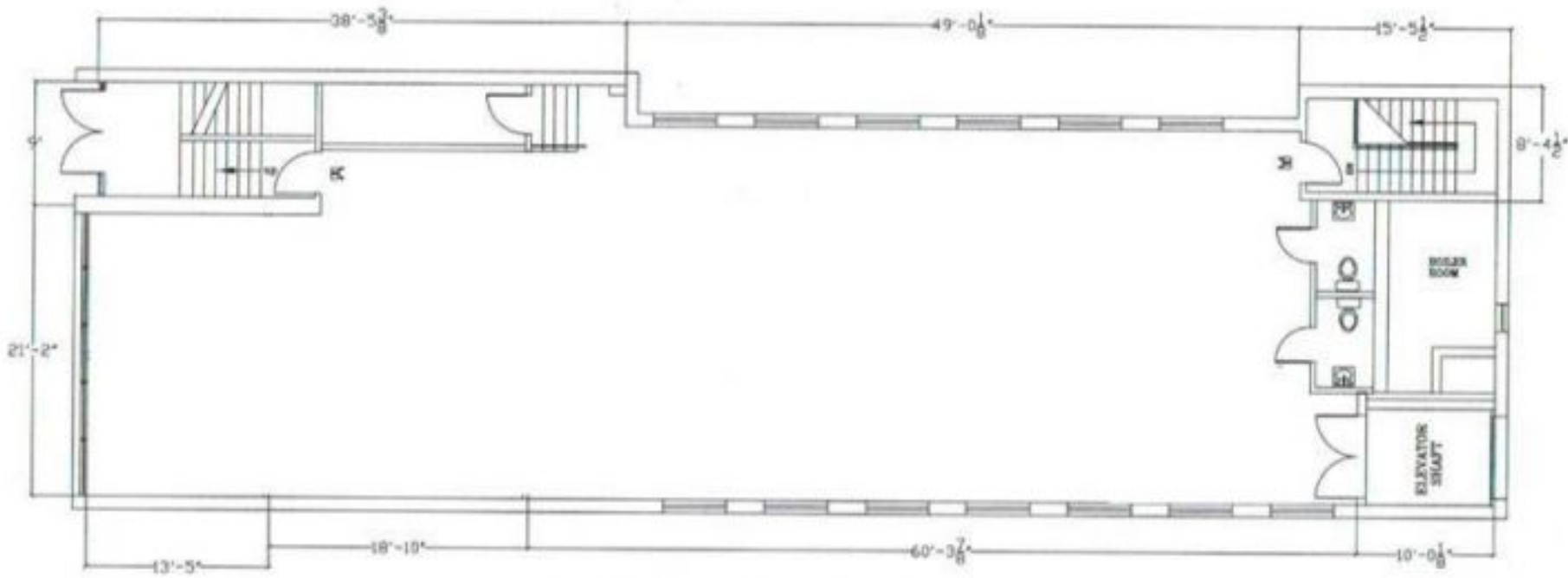
---

<b>Location</b>	North side of King Street West, East of Bathurst Street <a href="#">Click Here for Map</a>
<b>Building Details</b>	3,000 Square Feet
<b>Semi-Gross Rental Rate</b>	\$38.00 PSF/YR
<b>Additional Rent</b>	Hydro
<b>Possession</b>	Immediate

## FEATURES

---

- Prime King Street West location in the Entertainment District.
- Open concept, lower level office space.
- Includes rare two parking spaces on site.
- 10 foot ceilings, Kitchenette with dining area
- Two private washrooms.
- Excellent shipping and receiving via back laneway.
- Freight elevator and additional rear entry.
- Air conditioned & forced air gas heating.



EXISTING BASEMENT FLOOR PLAN



PHOTOS

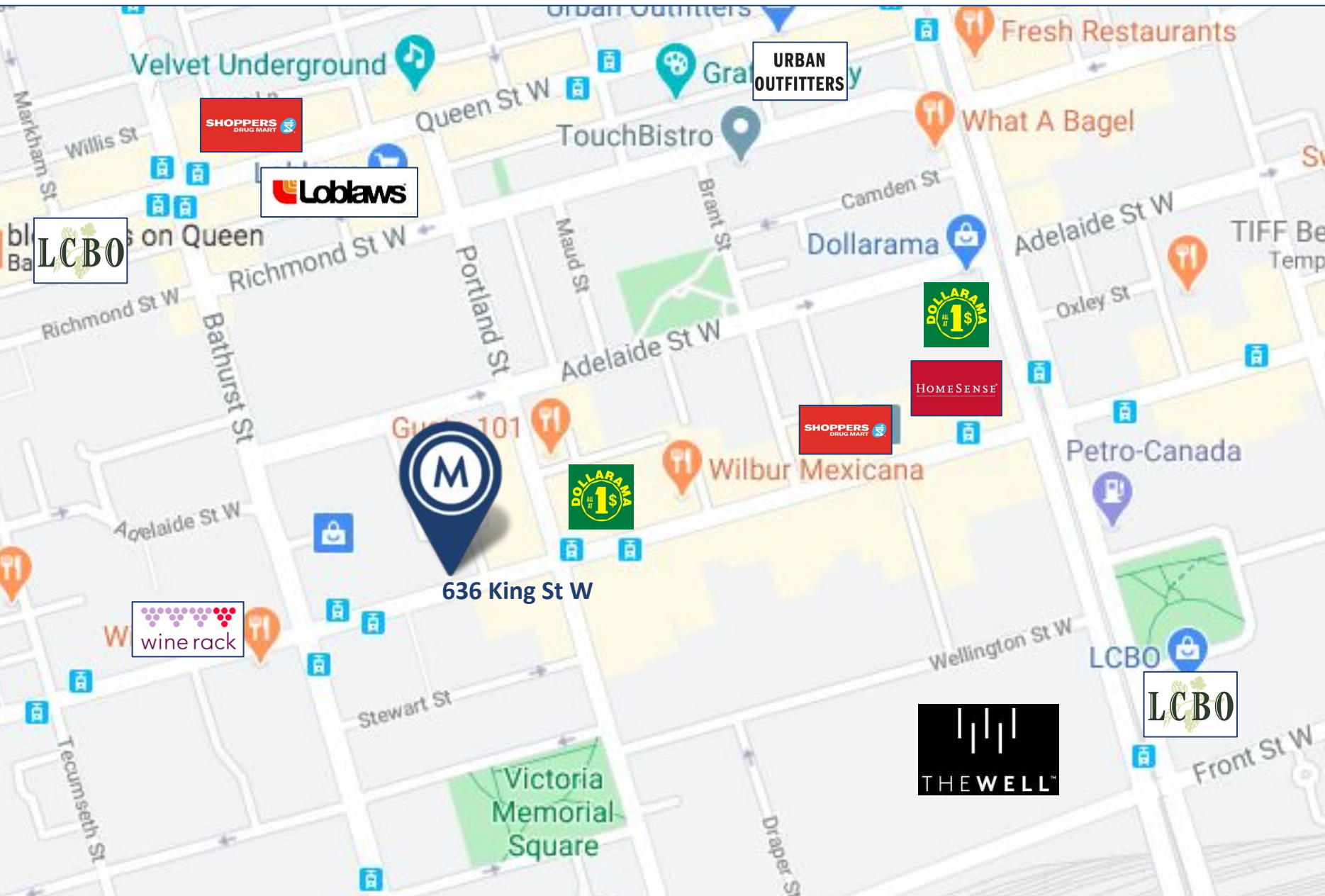




PHOTOS



636 KING STREET WEST | FOR LEASE



AREA MAP

636 KING STREET WEST | FOR LEASE



# METROPOLITAN COMMERCIAL

626 King St West, Suite 302  
Toronto, ON  
M5V 1M7

[www.metcomrealty.com](http://www.metcomrealty.com)

## CONTACT:

**STEVEN PHILLIPS\***  
Vice President, Sales Representative  
416.703.6621 ext. 233  
[Steven.phillips@metcomrealty.com](mailto:Steven.phillips@metcomrealty.com)

**MING ZEE\*\***  
Principal, Broker of Record  
416.703.6621 ext. 222  
[Ming.zee@metcomrealty.com](mailto:Ming.zee@metcomrealty.com)