

FOR SUBLEASE
915 Dupont St
Office Space



METROPOLITAN
COMMERCIAL

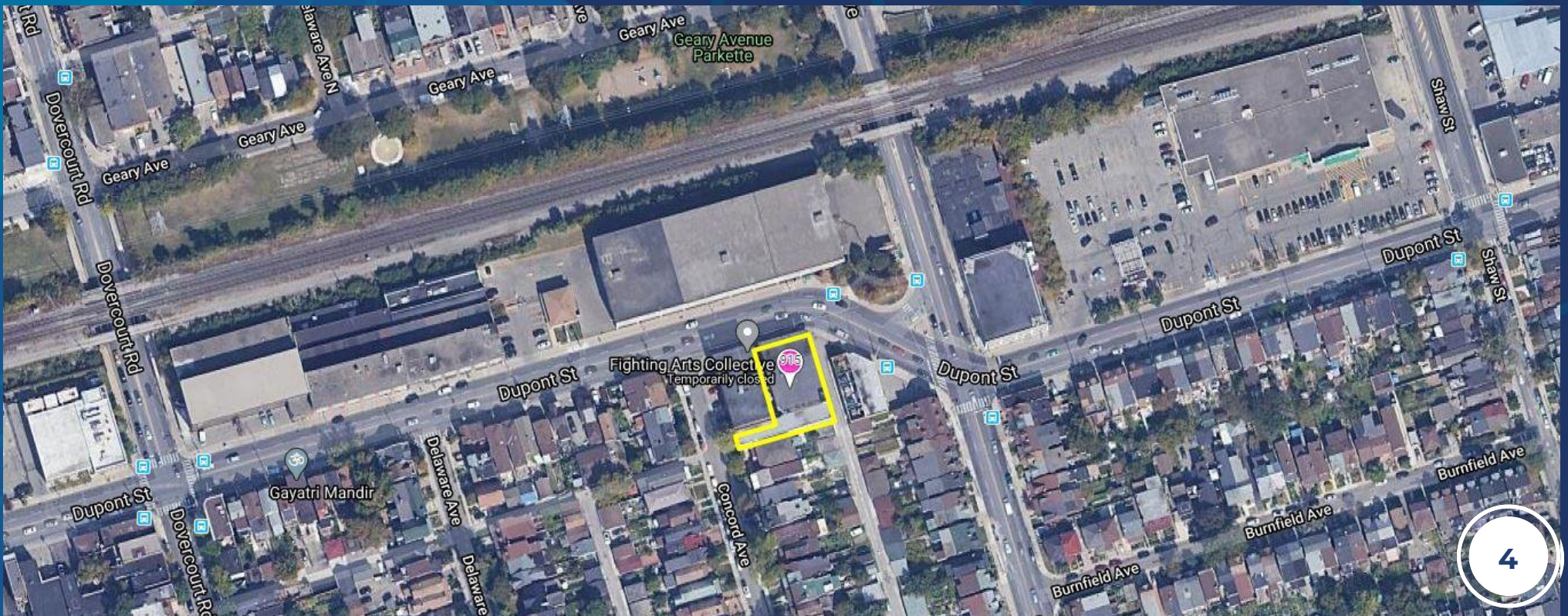
PROPERTY DETAILS

LOCATION	Located on Dupont Street, West of Ossington Avenue. CLICK HERE
BUILDING DETAILS	Suite 208 - 1,408 SF
RENTAL RATE	\$33.00 PSF/YR Semi-gross + Utilities
TERM	Sublease to Feb 28 2025 (Additional Term Available)
POSSESSION	Immediate

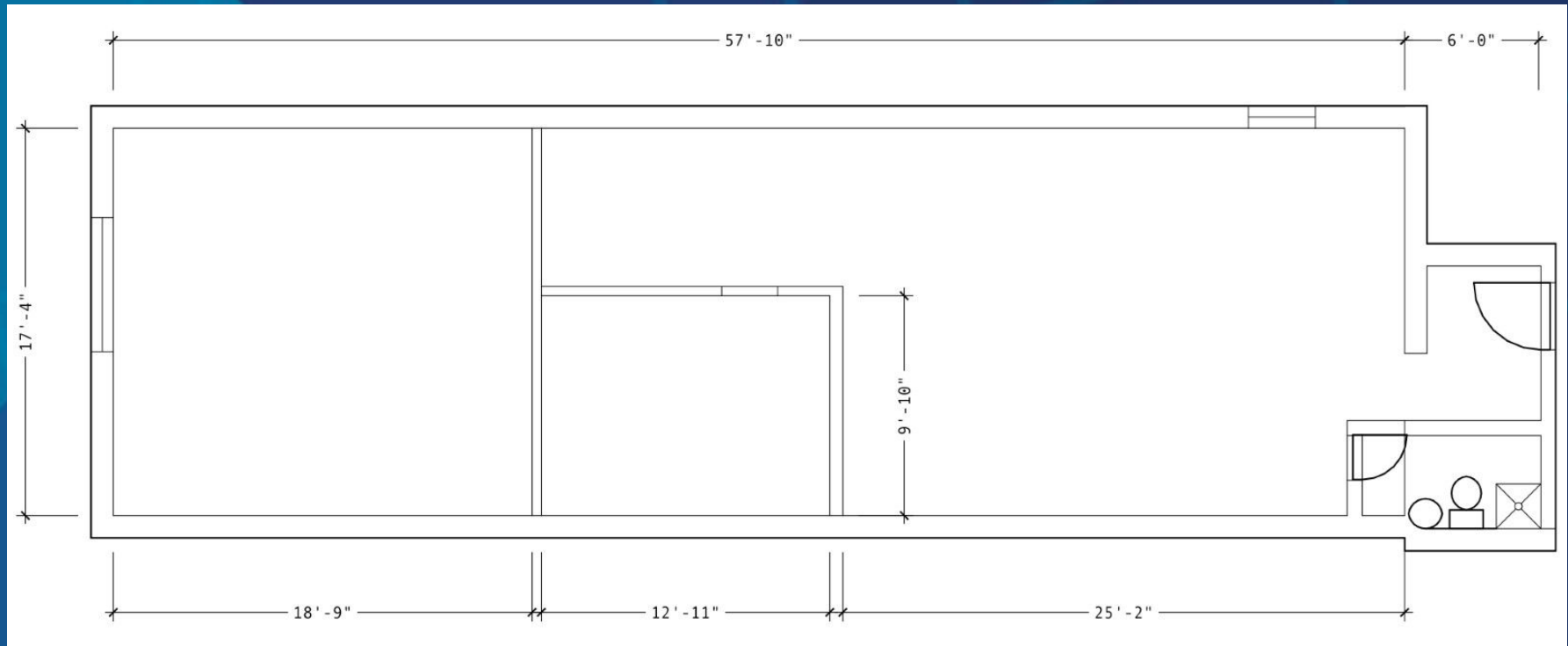
PROPERTY SUMMARY

- A variety of office/studio spaces at the Dupont St. and Ossington Ave. intersection
- Classic 1930's industrial two-storey building
- Open Concept studio with concrete floor and abundant natural light
- 12' ceiling height
- TTC accessible via the 63 Ossington bus from Bloor Street West, (Ossington Subway Station)
- 3 minute walk to Faema Café and Loblaws

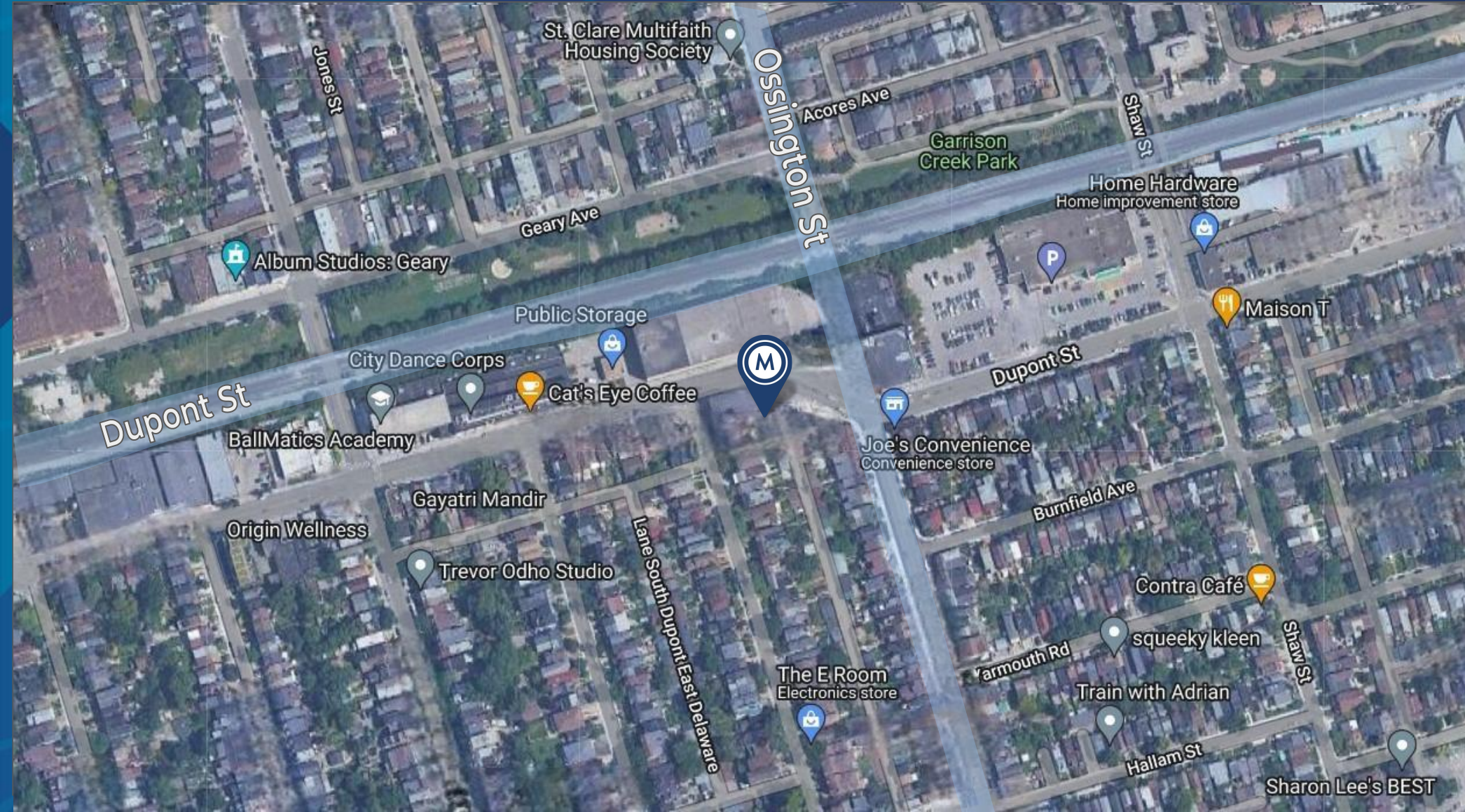




FLOOR PLAN



AREA MAP



CONNECTIVITY



BIKE SCORE OF 48

→ Minimal bike infrastructure



TRANSIT SCORE OF 32

→ A few nearby public transportation options



WALK SCORE OF 56

→ Some errands can be accomplished on foot



METROPOLITAN
COMMERCIAL





**METROPOLITAN
COMMERCIAL**

CONTACT

TIM NOVAK

Senior Vice President

416.703.6621 x 246

tim.novak@metcomrealty.com

150 Beverley St | Suite 1 Toronto, ON | M5T 1Y5

416.703.6621

www.metcomrealty.com

The information contained herein has been gathered from sources deemed reliable. However, Metropolitan Commercial Realty Inc., Brokerage, its agents, or employees make no representations or warranties on the accuracy of said information. Prospective tenants and their agents are advised to independently verify any information provided herein. Metropolitan Commercial Realty Inc., Brokerage