

FOR LEASE | STUDIO OFFICE | SOUTH BUILDING

35 GOLDEN AVENUE

TORONTO | ON



METROPOLITAN
COMMERCIAL





DETAILS

Location	Top of Golden Avenue near Dundas St W and Bloor St W. Click Here for Map
Building Details	Unit 117 - 540 SF Unit 118 - 1,283 SF
Rental Rate	Unit 117 - \$1,825/Month Unit 118 - \$3,955/Month
Term	1-3 years
Possession	Immediate
Parking	1 parking space - \$79/Month

FEATURES

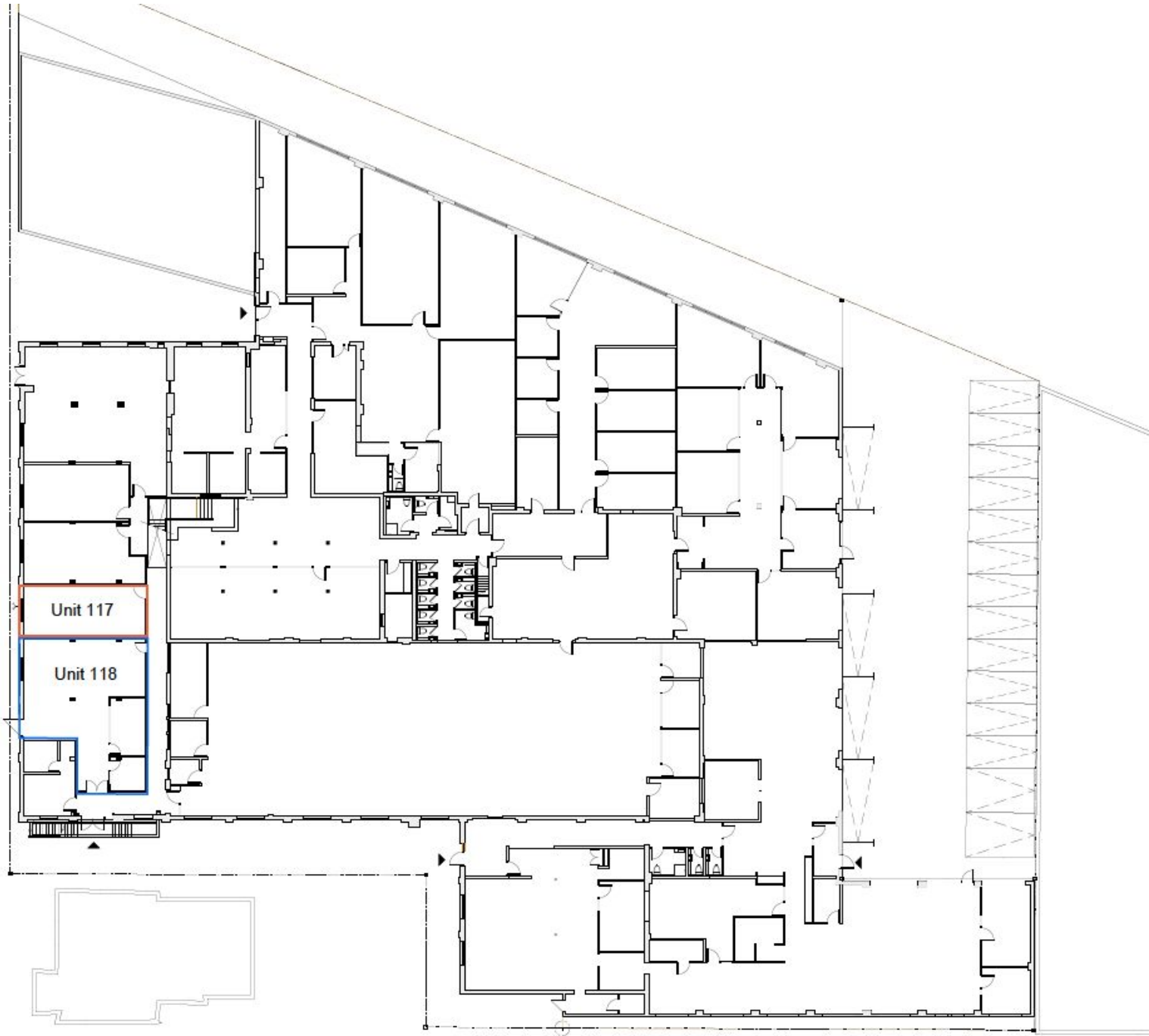
- Studio office space.
- Main floor with concrete floors, 12ft ceilings, wood-mill construction and open area.
- Steps to Dundas West TTC subway station.
- Abundant natural light.
- Direct street access/entrance.

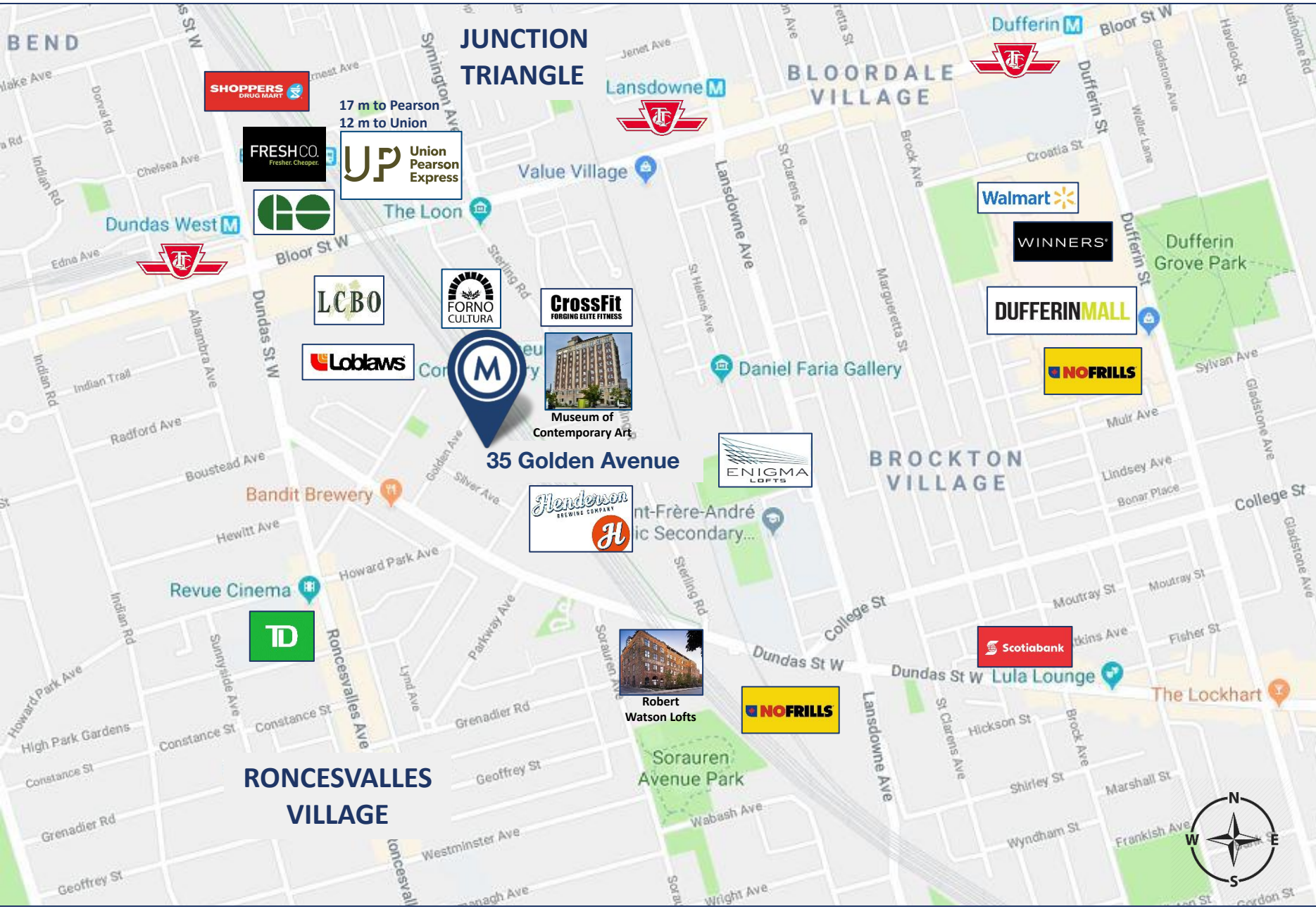


BUILDING PHOTOS



FLOOR PLAN





AREA MAP

35 GOLDEN AVENUE | FOR LEASE



METROPOLITAN COMMERCIAL

150 Beverley Street, Unit 1
Toronto, ON
M5T 1Y5

www.metcomrealty.com

CONTACT:

TIM NOVAK*
Senior Vice President
416.703.6621 ext. 246
tim.novak@metcomrealty.com