

FOR LEASE | STUDIO / OFFICE SPACE

46 NOBLE STREET

TORONTO, ON



METROPOLITAN
COMMERCIAL





DETAILS

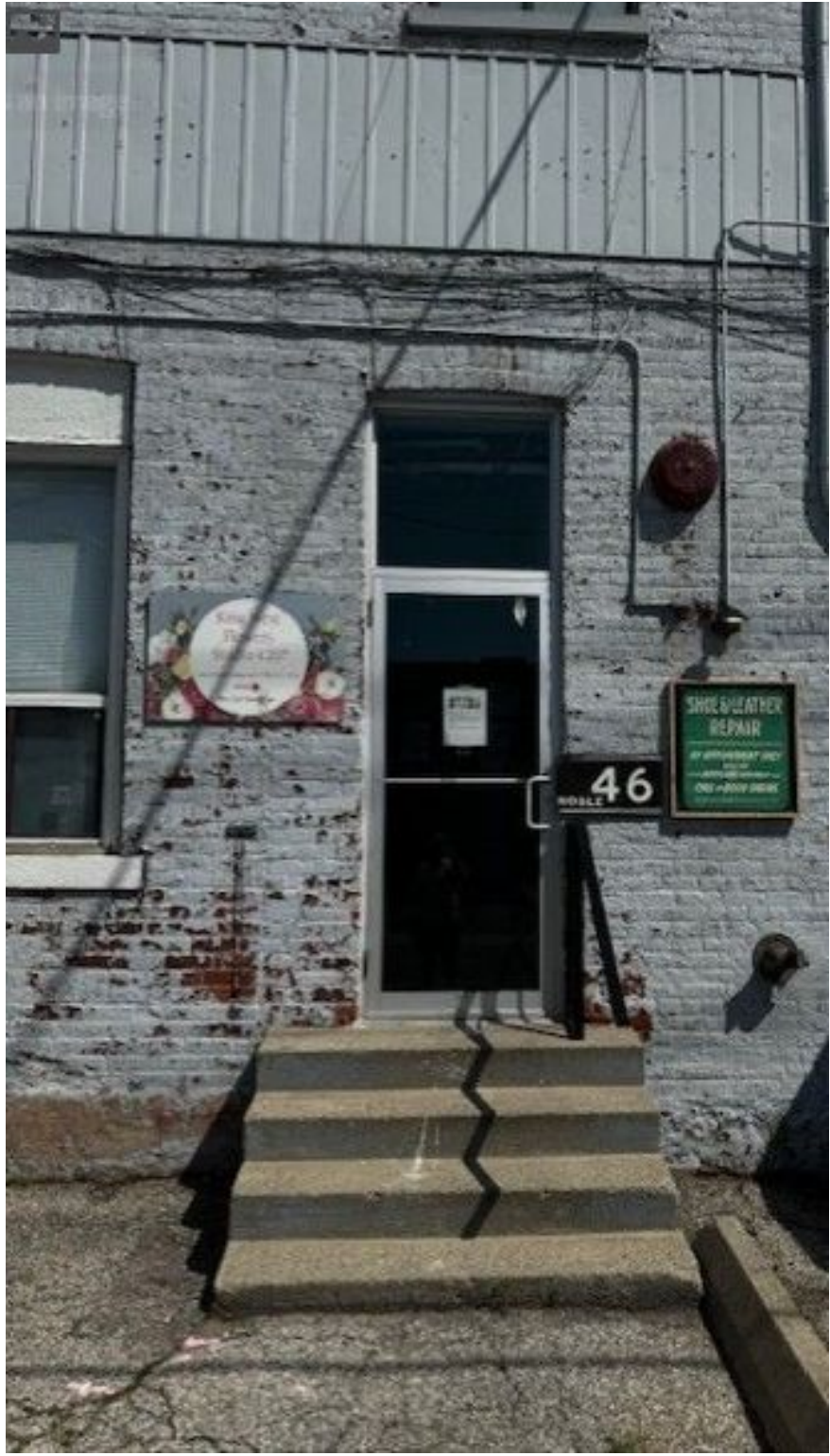
Location	Just north of Queen Street West and Brock Street. <u>CLICK HERE</u>
Unit Details	Suite 210 - 1,450 SF Suite 203 - 950 SF
Rental Rate	Suite 210 - \$4,300/Month Suite 203 - \$2,850/Month
Term	1 to 3 Years
Possession	December 1, 2024

PROPERTY OVERVIEW

- Bright second floor studios
- A Toronto classic brick and beam building with wood floors
- Unit includes kitchen and bathroom
- Minutes away from Queen Street West TTC Streetcars
- 13 foot ceilings



INTERIOR PHOTOS
46 NOBLE STREET



INTERIOR PHOTOS
46 NOBLE STREET



Transit Score
87
Excellent Transit
Transit is convenient for most trips.

Walk Score
92
Walker's Paradise
Daily errands do not require a car.

AREA MAP
46 NOBLE STREET

**METROPOLITAN
COMMERCIAL**



**Built on
Connections.**

**150 Beverley St | Unit 1
Toronto, ON | M5T 1Y5**

416.703.6621

metcomrealty.com

CONTACT:

TIM NOVAK*

Senior Vice President, Sales Representative

416.703.6621 x246

tim.novak@metcomrealty.com