

# 30 POWERHOUSE STREET

TORONTO, ON



# PROPERTY DETAILS

---

## LOCATION

On Powerhouse St, off Foundry Ave and Davenport Rd.  
[Click here for map.](#)

## BUILDING DETAILS

### SECOND FLOOR

Unit 2B - 1100 SF  
Unit 2C - 1200 SF

### THIRD FLOOR

Unit 1 - 2,944 SF  
Unit 2 - 2,286 SF  
Unit 3 - 1,214 SF

### FOURTH FLOOR

7,650 SF - Full Floor

## RENTAL RATE

\$45.00 PSF Semi-Gross

## TERM

3 to 10 Years

## POSSESSION

Q3 2024

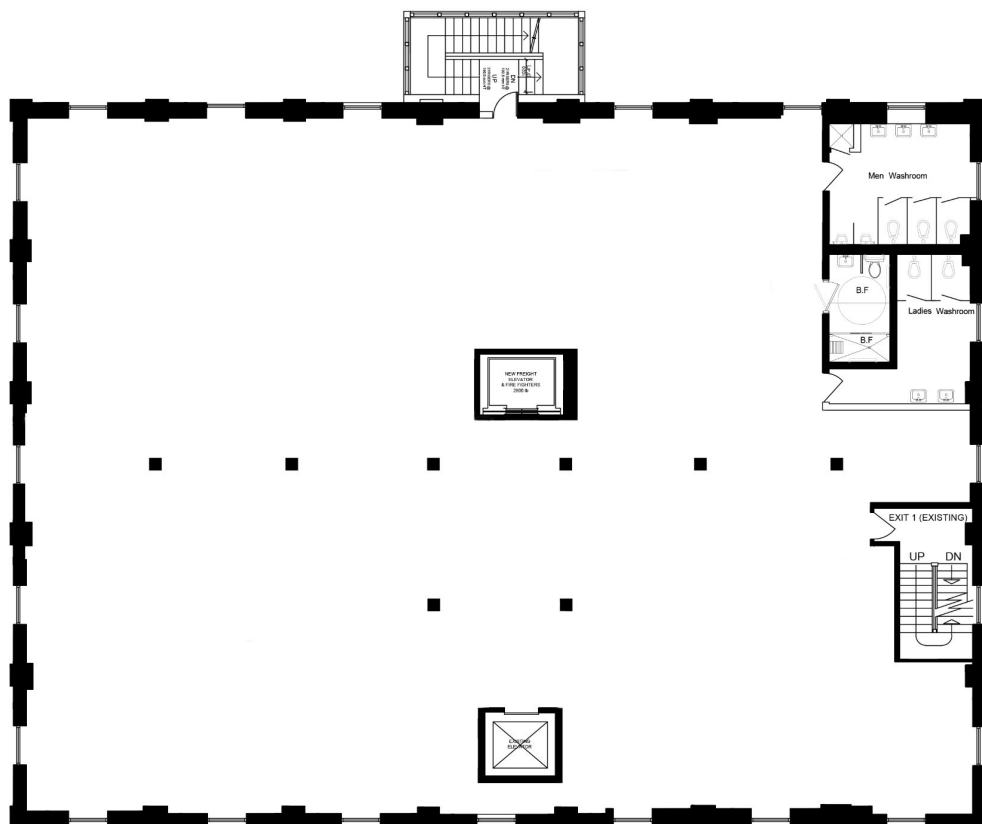
## FEATURES

---

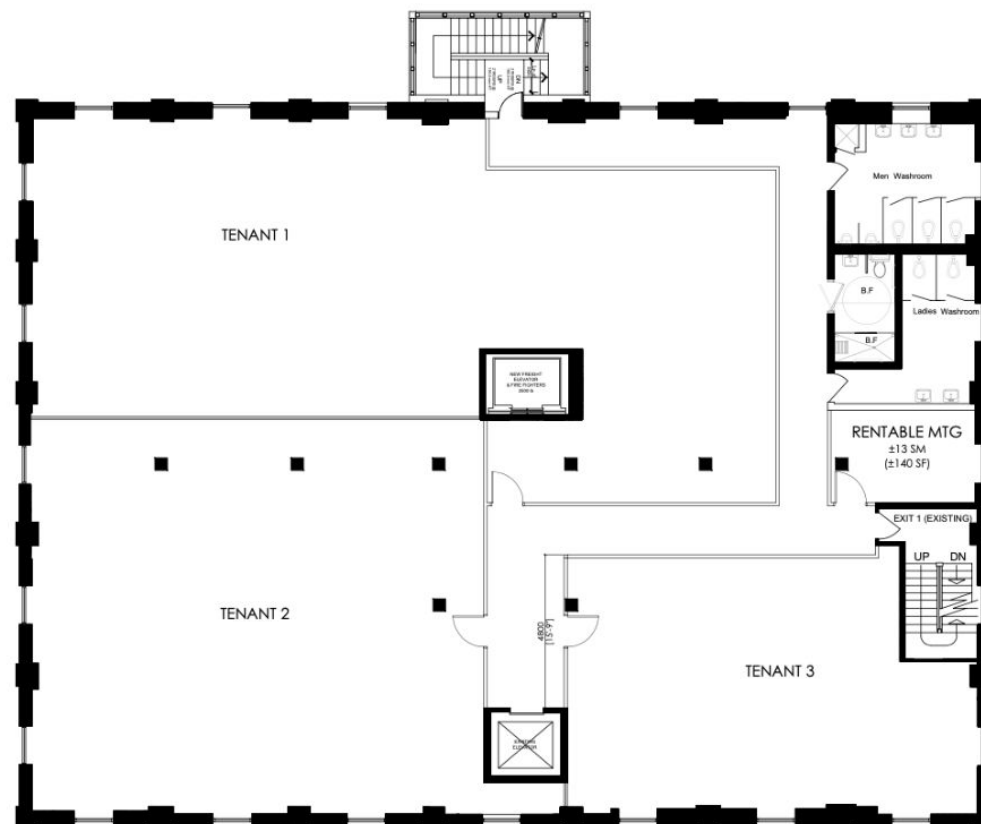
- 7,650 SF floor plates and 13' ceilings
- Easy stair access & new elevator servicing all floors
- 5 climate control zones per floor
- Underground parking with bicycle storage (1 per 1,000 SF)
- Building signage available
- Wheelchair accessible

# FLOOR PLANS: 2ND FLOOR OPTIONS

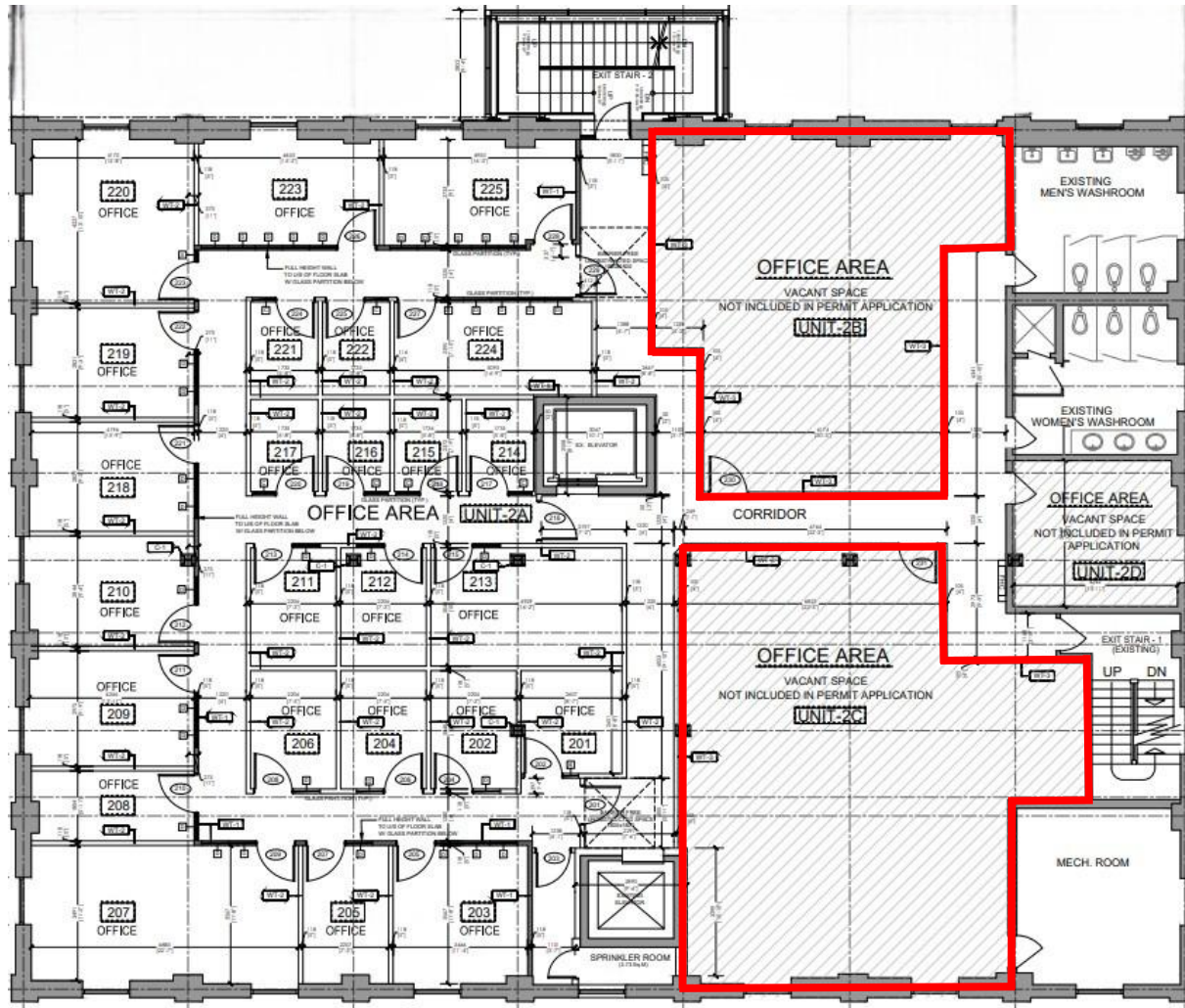
STANDARD FLOOR PLAN FOR FLOORS 2-4



PROPOSED DIVISION 3RD FLOOR



# FLOOR PLANS: 2ND FLOOR



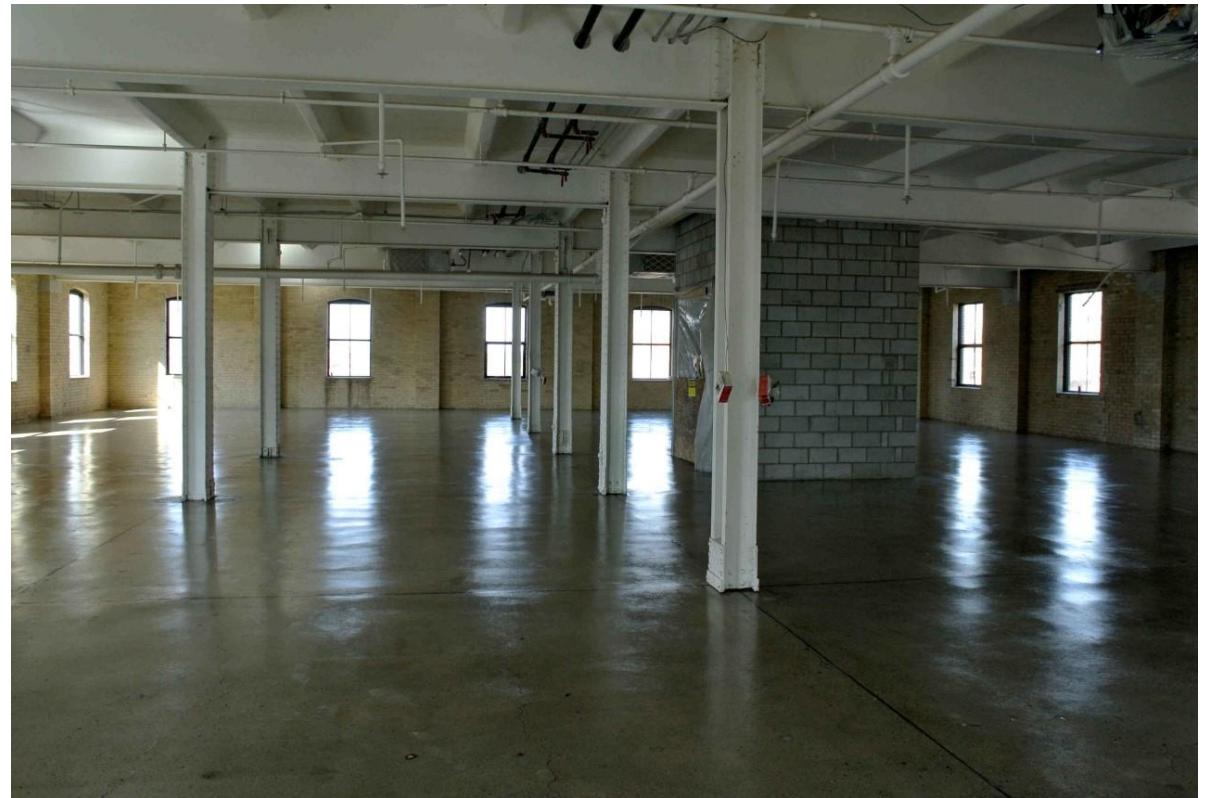
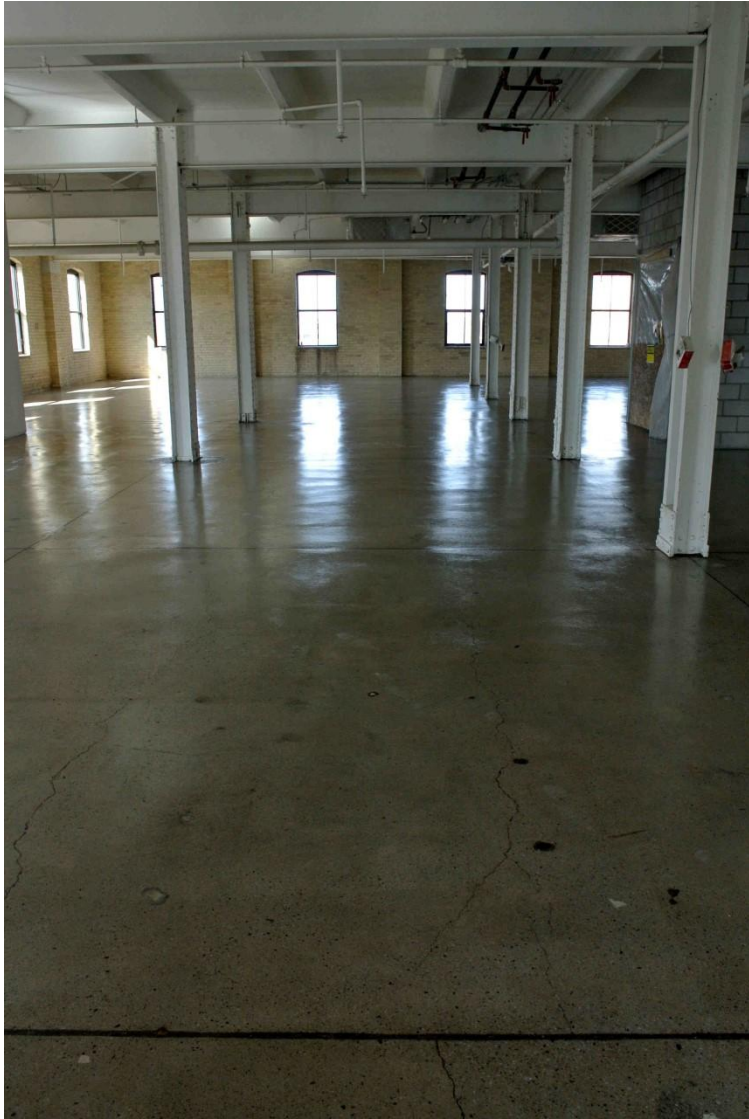
# INTERIOR PHOTOS

---



# INTERIOR PHOTOS

---



EARLSCOURT PARK

PRIMROSE PARKETTE

DAVENPORT RD

SYMINGTON AVE

LANSDOMNE AVE

BALZAC'S  
COFFEE ROASTERS



LOVE CHIX

*Caldense*  
Bakery

BEER STORE

BOO RADLEY'S

Piri Piri  
RÔTISSERIE PORTUGAISE

SHOPPERS  
DRUG MART

EMERSON ESPRESSO

DUPONT ST

Gus  
TACOS

Lucia



iBrasa!  
PERUVIAN KITCHEN





# 30 POWERHOUSE STREET

## TORONTO, ON



**TIM NOVAK**

Senior Vice President  
Sales Representative

M. 416.889.7100

W. 416.703.6621 ext. 246

[tim.novak@metcomrealty.com](mailto:tim.novak@metcomrealty.com)

150 BEVERLEY STREET, UNIT 1

TORONTO, ON | M5T 1Y5

416.703.6621

[WWW.METCOMREALTY.COM](http://WWW.METCOMREALTY.COM)

The information contained herein has been gathered from sources deemed reliable. However, Metropolitan Commercial Realty Inc., Brokerage, its agents, or employees make no representations or warranties on the accuracy of said information. Prospective tenants and their agents are advised to independently verify any information provided herein.

Metropolitan Commercial Realty Inc., Brokerage