

FOR LEASE

405-411 Parliament St

Office Space | ENTIRE BUILDING



**METROPOLITAN
COMMERCIAL**

PROPERTY DETAILS

LOCATION

Located on the corner of Parliament St and Gerrard St. [CLICK HERE](#)

BUILDING DETAILS

Entire Second Floor: 6,318 SF
Main Floor (409): 6,159 SF
Lower Level: 6,309 SF
Total: 18,875 SF

RENTAL RATE

\$23.00 PSF/YR Semi-gross plus Hydro

TERM

2-10 Years

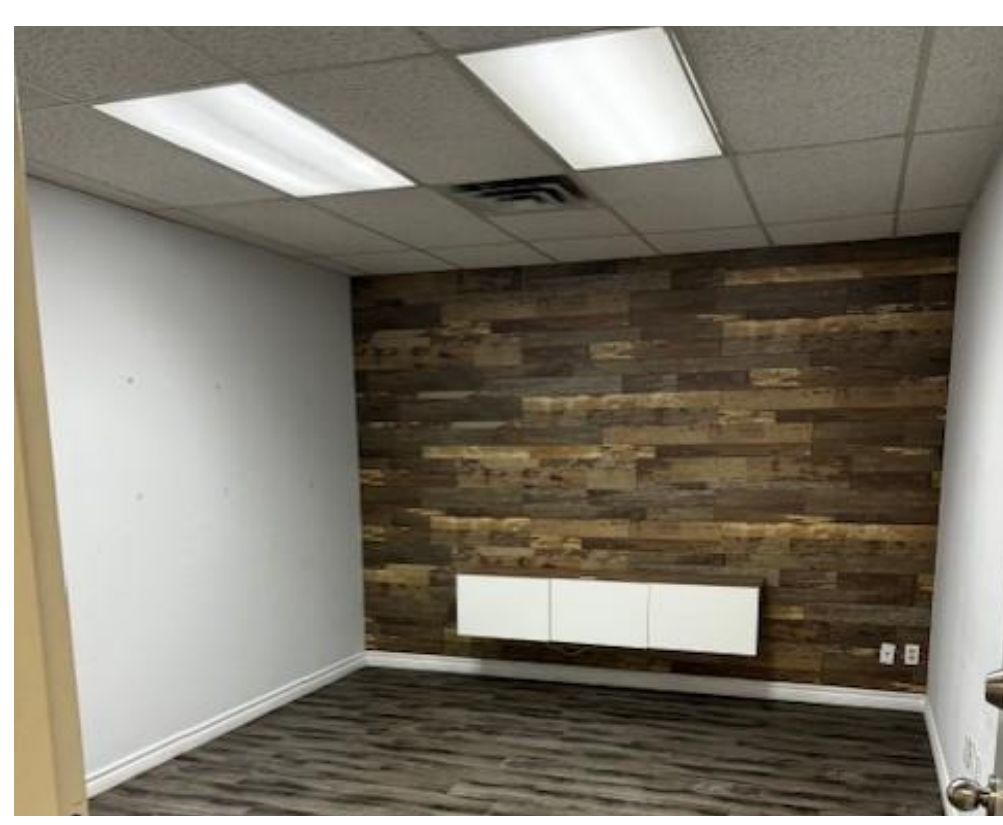
POSSESSION

July 1st 2024

PROPERTY SUMMARY

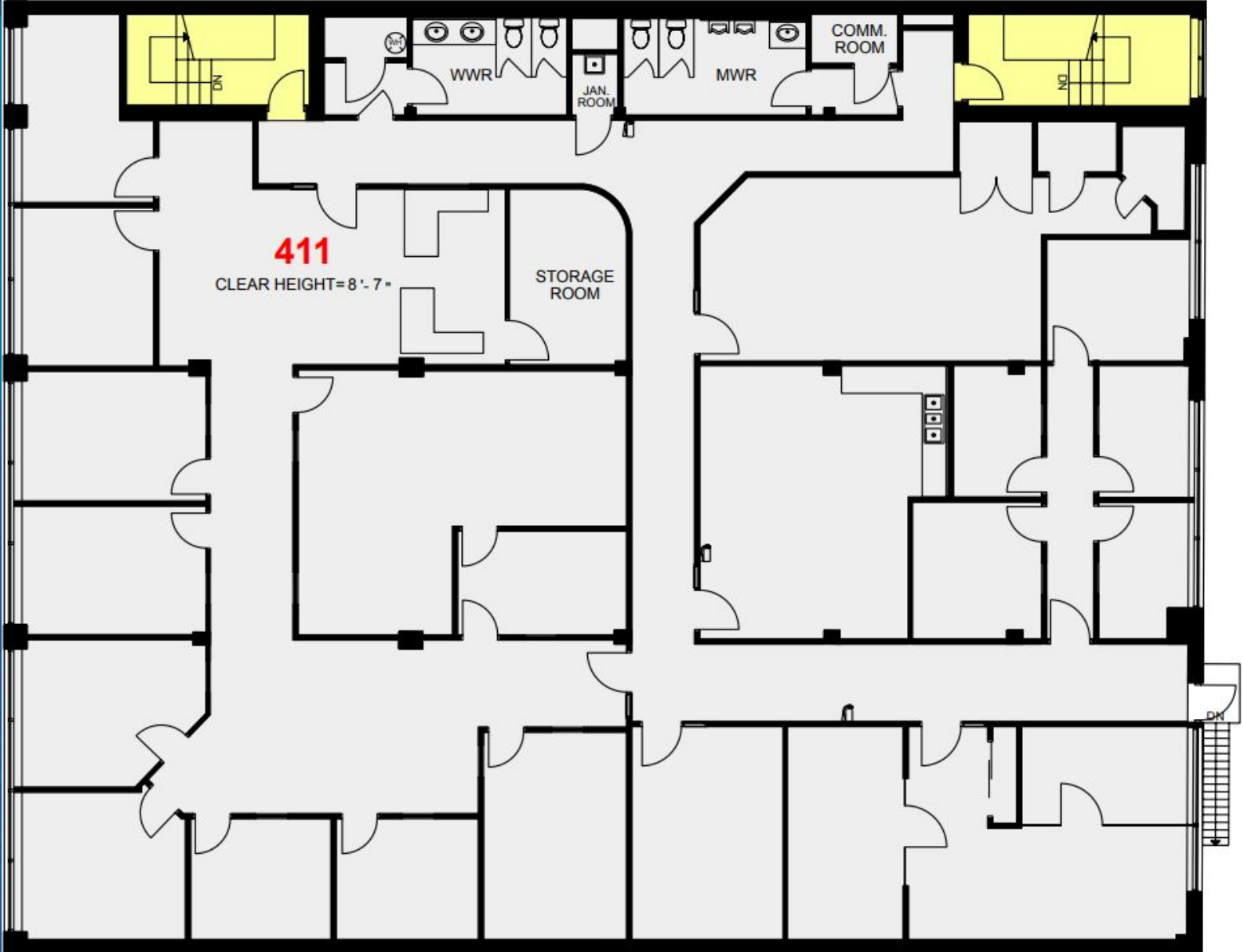
- Entire second floor (405-411 Parliament St) available with abundant private offices, training rooms and meeting spaces
- Main floor space (409 Parliament St) available for office or retail uses
- Property ideal for medical, school or office uses
- 4 onsite parking spaces
- Entire building available: 18,875 SF
- Building signage available





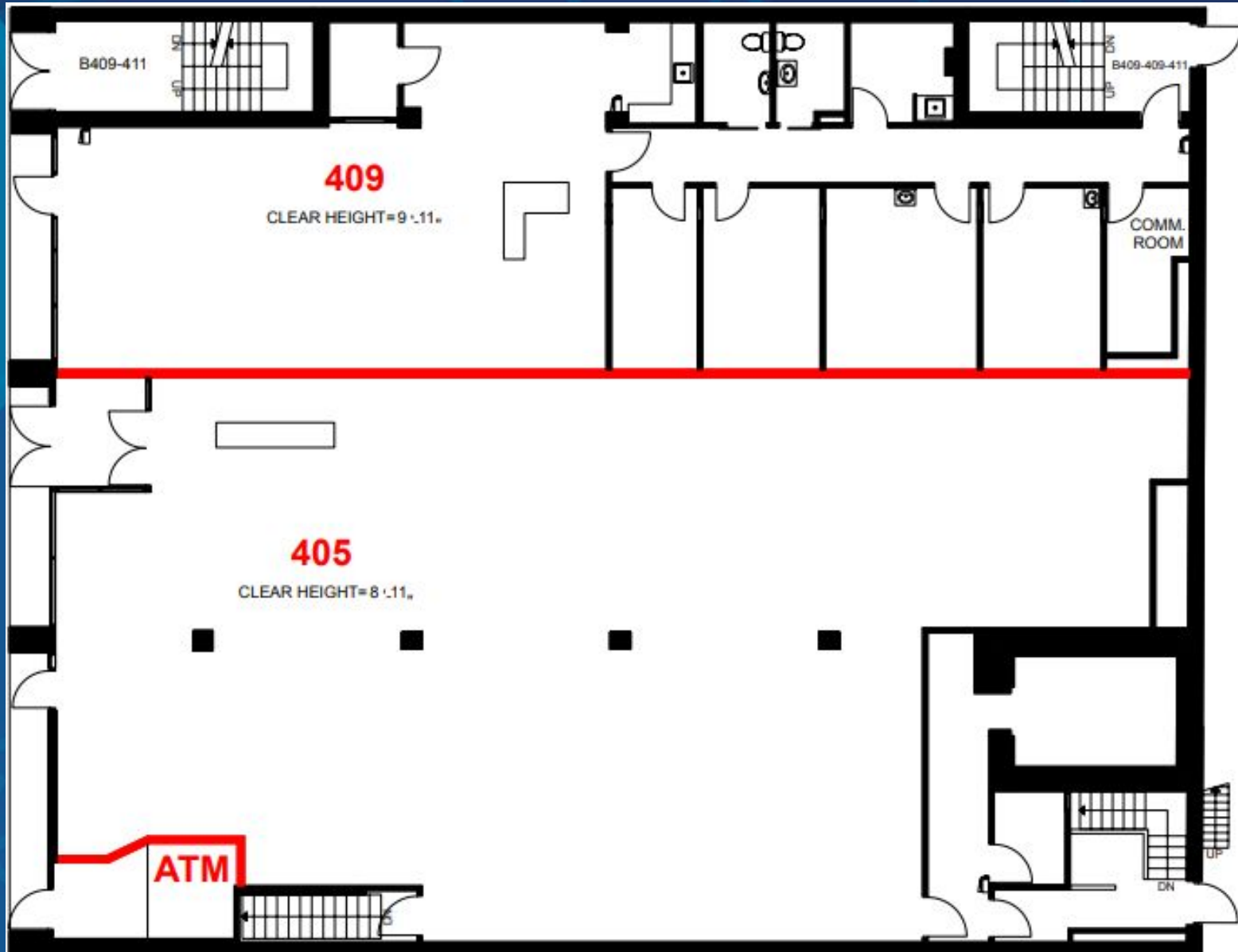
FLOOR PLAN

Second Floor



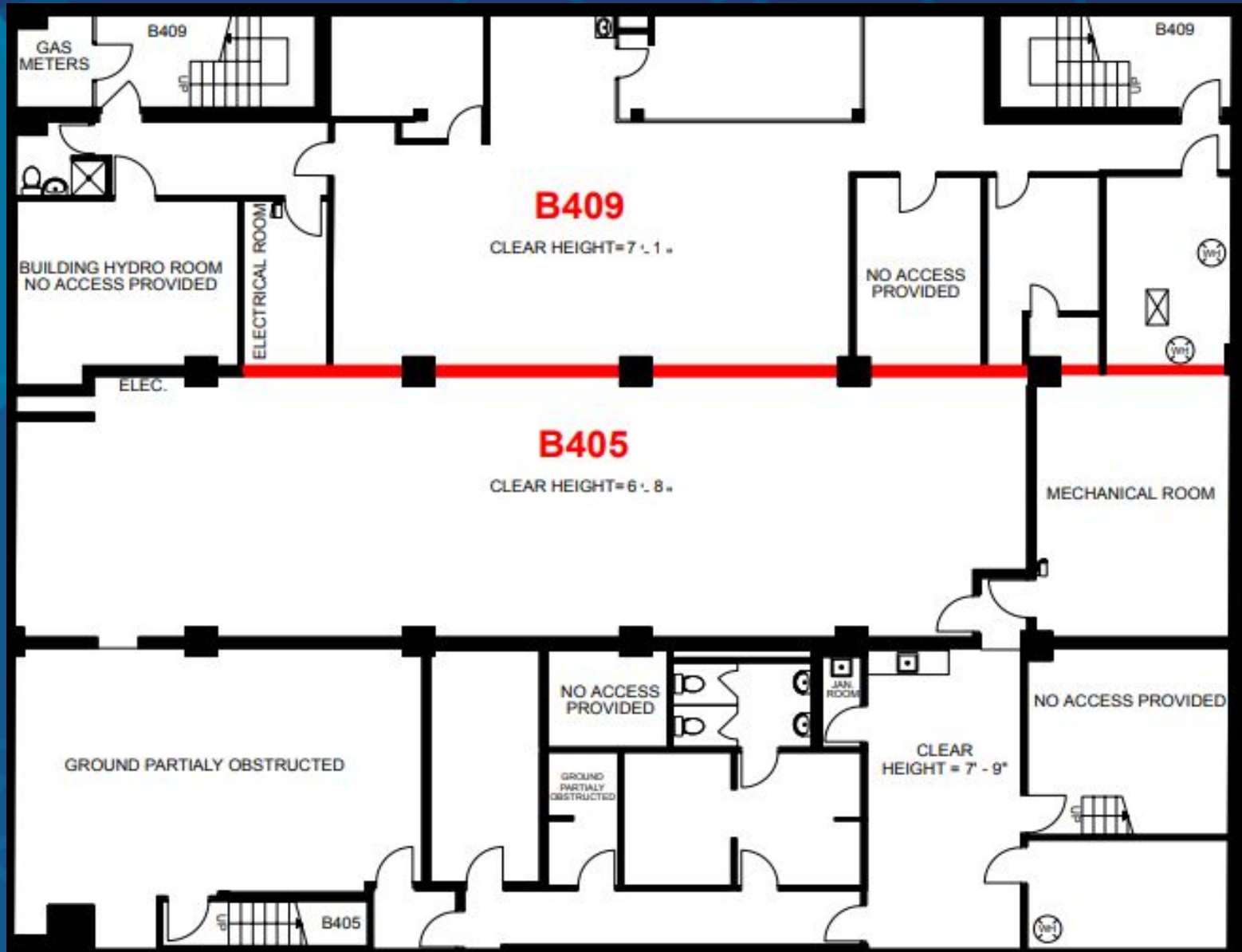
FLOOR PLAN

Main Floor



FLOOR PLAN

Lower Level



AREA MAP



CONNECTIVITY



BIKE SCORE OF 100

→ Daily errands can be accomplished on a bike



TRANSIT SCORE OF 92

→ World-class public transportation



WALK SCORE OF 99

→ Daily errands do not require a car



METROPOLITAN
COMMERCIAL





**METROPOLITAN
COMMERCIAL**

CONTACT

TIM NOVAK

Senior Vice President

416.703.6621 x 246

tim.novak@metcomrealty.com

150 Beverley St | Suite 1 Toronto, ON | M5T 1Y5

416.703.6621

www.metcomrealty.com

The information contained herein has been gathered from sources deemed reliable. However, Metropolitan Commercial Realty Inc., Brokerage, its agents, or employees make no representations or warranties on the accuracy of said information. Prospective tenants and their agents are advised to independently verify any information provided herein. Metropolitan Commercial Realty Inc., Brokerage