

FOR SALE
137 Jarvis St
User/Investment Opportunity



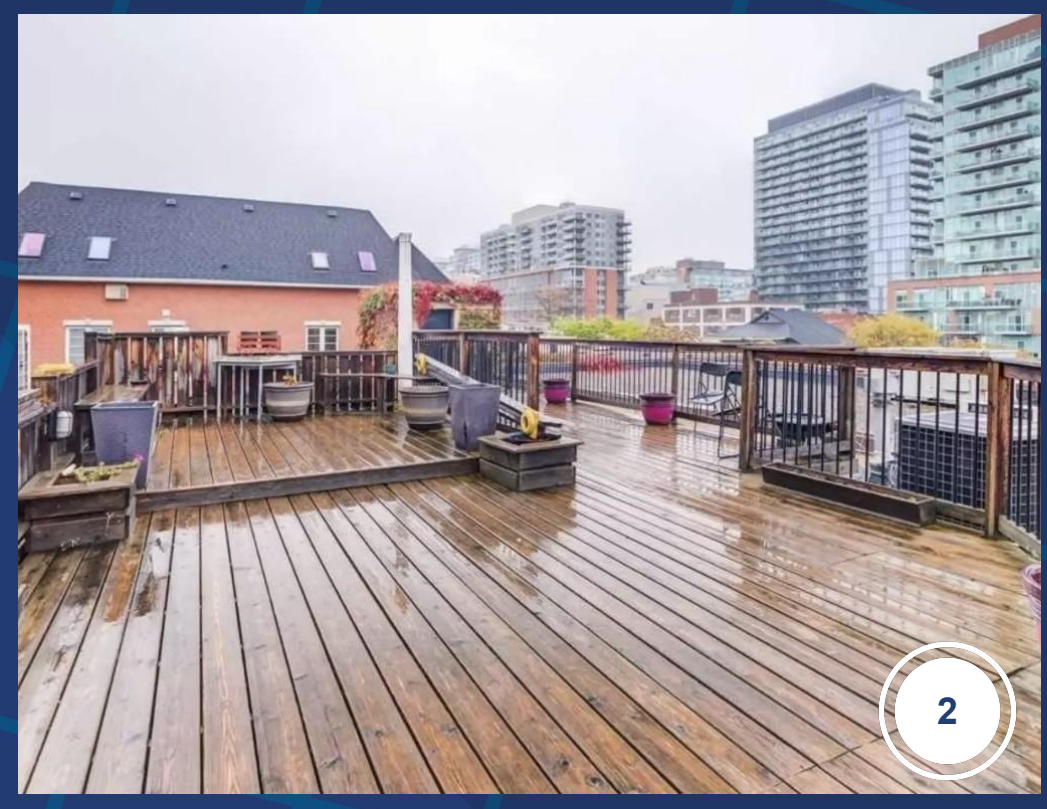
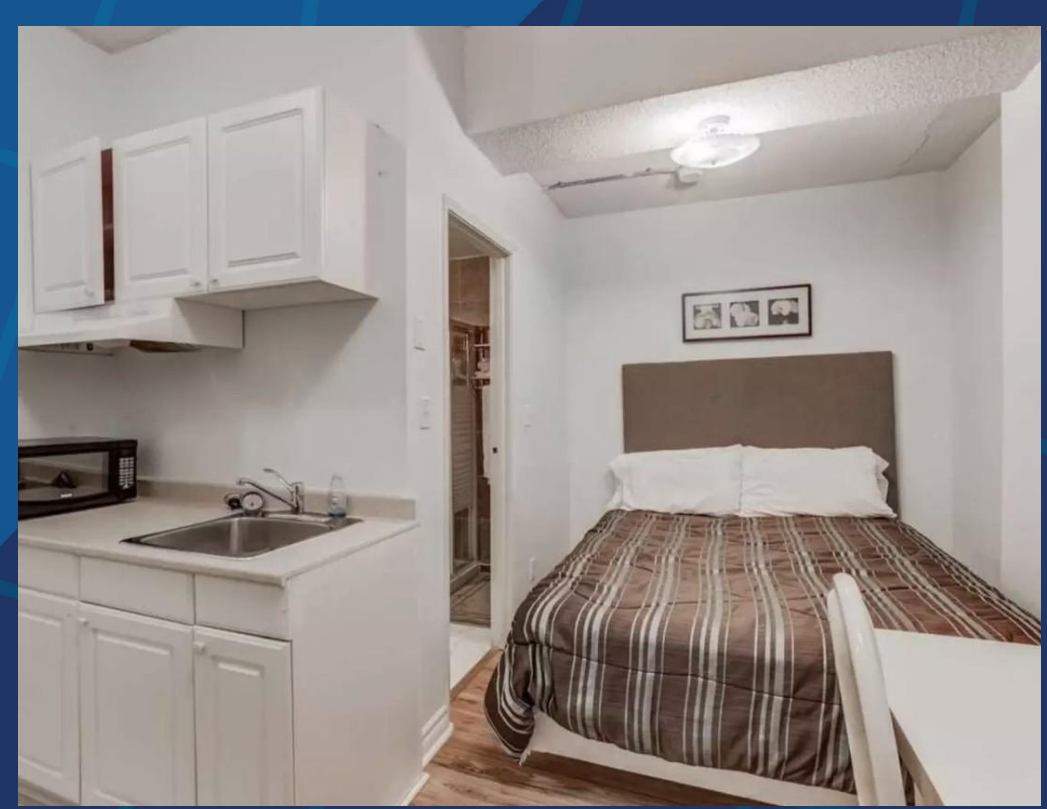
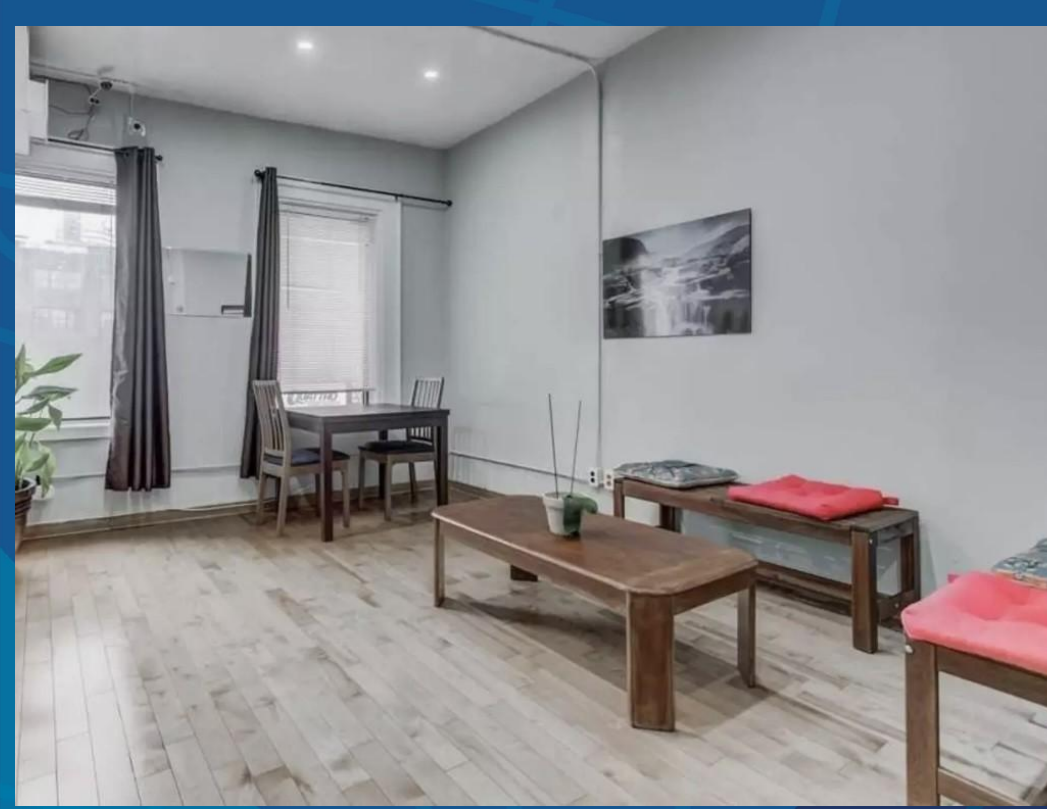
**METROPOLITAN
COMMERCIAL**

DETAILS

Location	On Jarvis Street, south of Queen Street East. <u>CLICK HERE</u>
Building Area	8,877 SF
Lot Area	4,306 SF
Frontage	33 Feet
Zoning	CRE*1)
Asking Price	\$6,985,000.00

FEATURES

- Great potential and opportunity to own a downtown hotel asset.
- Perfect for Developers, Hospitality Investors, and Users!
- Building can be transformed to various uses. Perfect for retail, professional, office, tech, creative, medical, wellness, beauty, food, gallery.
- 33 rooms over 3 storeys featuring a rooftop terrace with incredible view.
- Property is currently short-term residence. Buyer can use as such or can be vacant for buyer's desired use or development.
- Huge density. Close to inner core, Yonge Street, Eaton Centre, St. Lawrence Market.
- Surrounded by top retail, entertainment, restaurants, office, and excellent transit.
- VTB available.



CONNECTIVITY



BIKE SCORE OF 98

→ Daily errands can be accomplished on a bike



TRANSIT SCORE OF 100

→ World-class public transportation



WALK SCORE OF 99

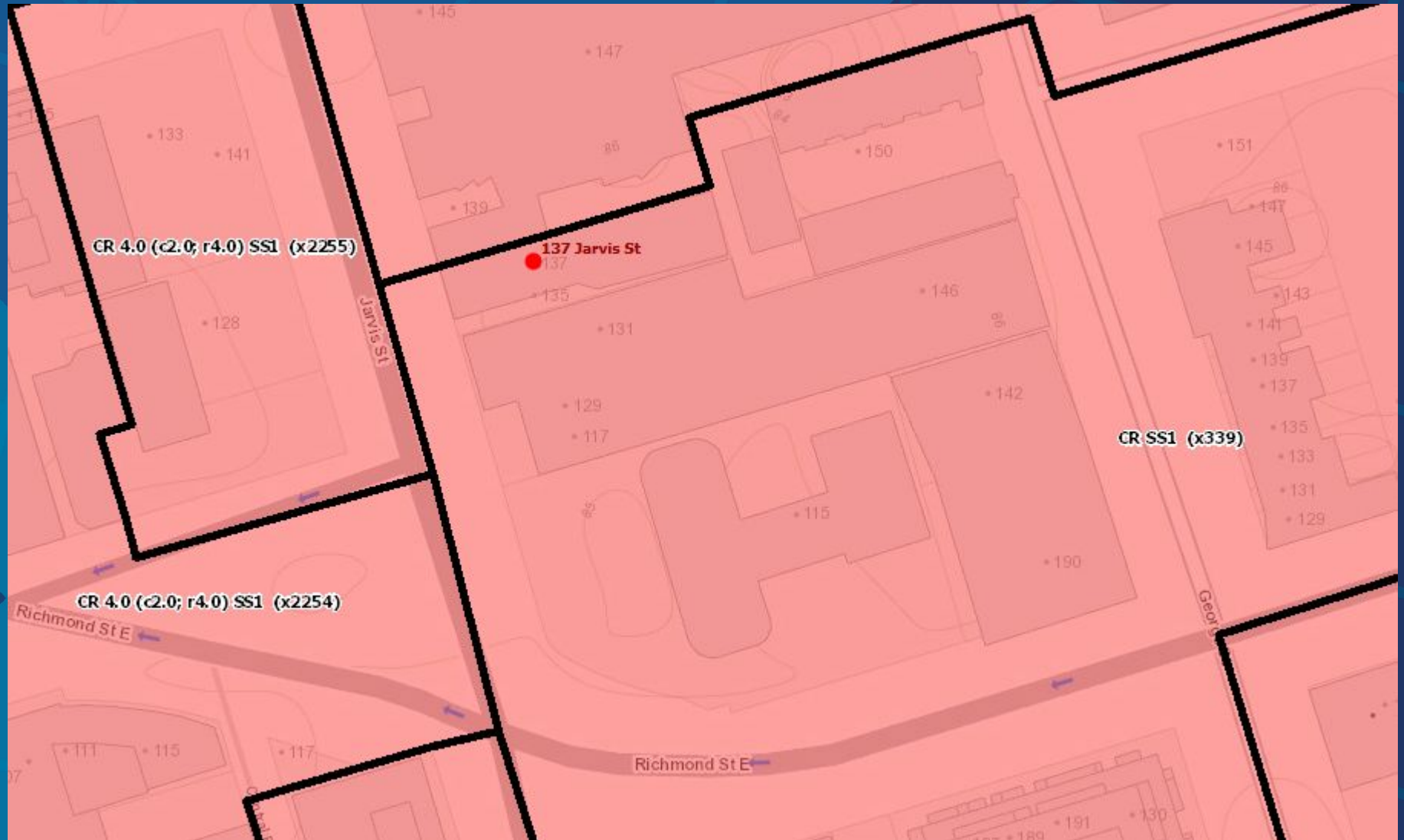
→ Daily errands do not require a car



METROPOLITAN
COMMERCIAL

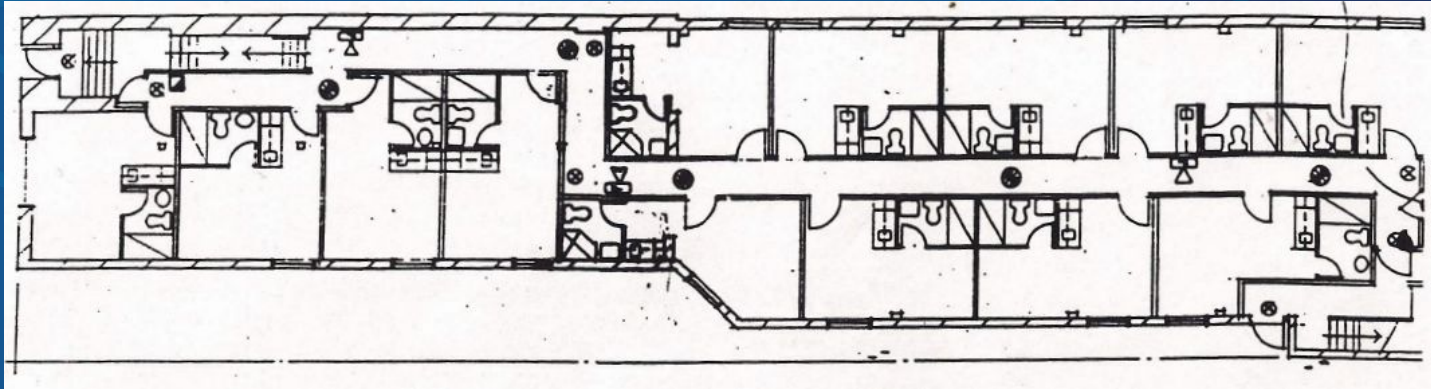


ZONING: CRE*1)

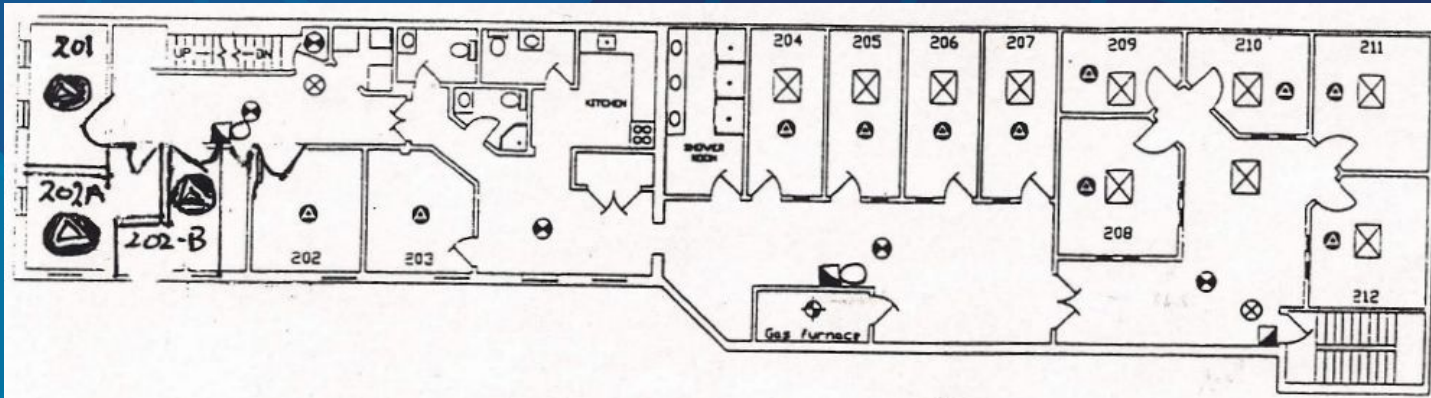


FLOOR PLANS

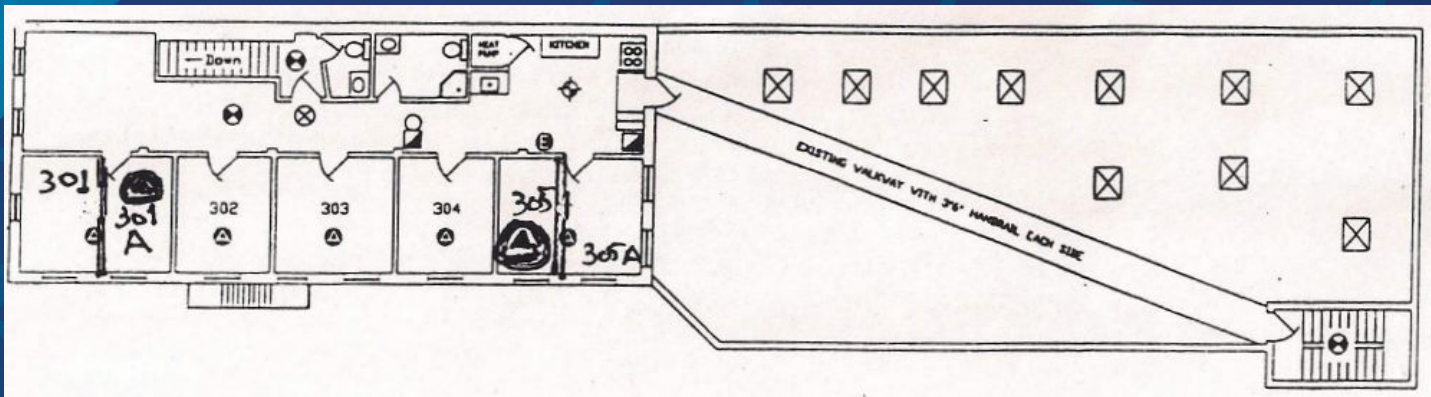
Ground Floor



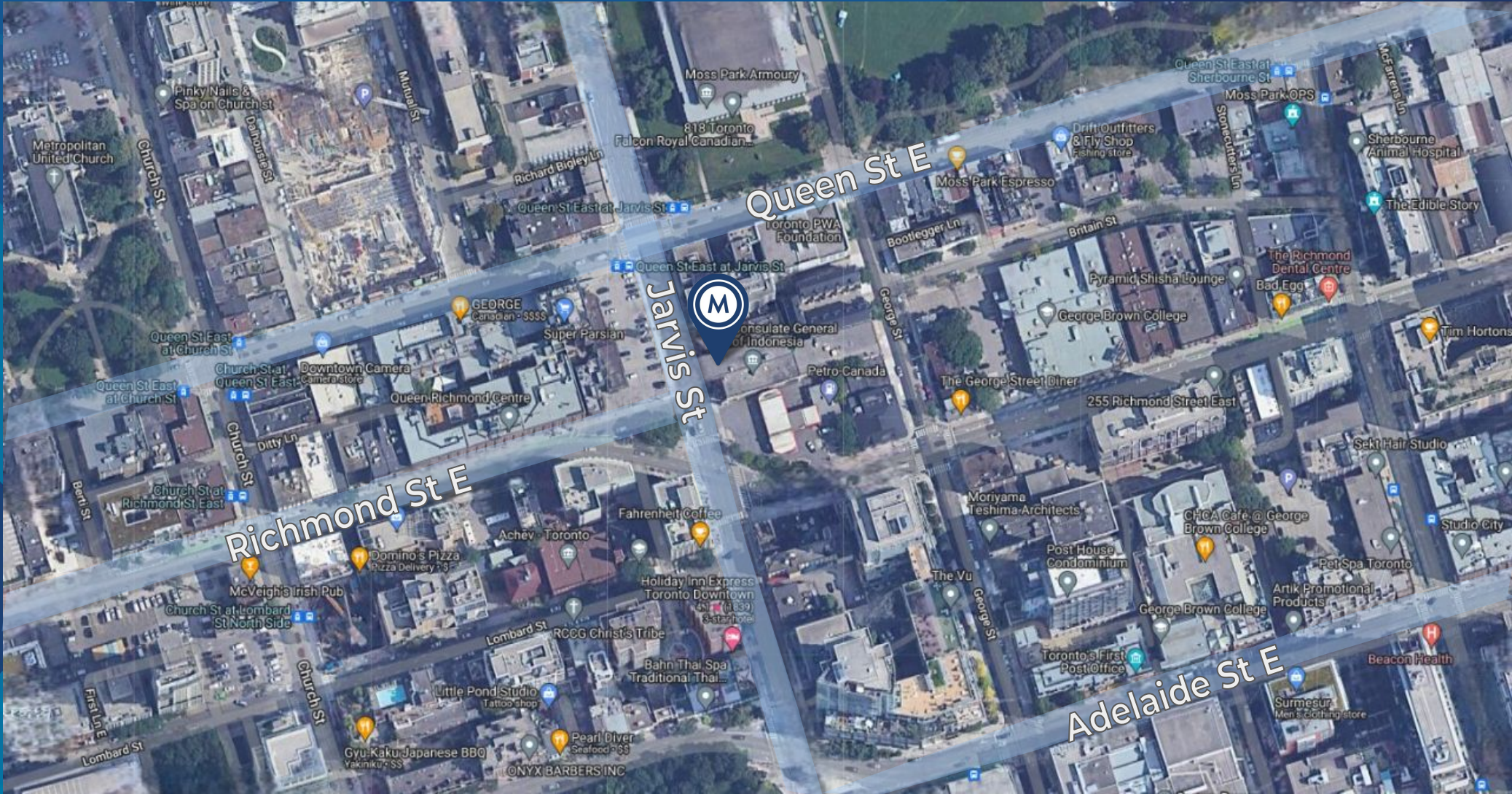
Second Floor



Third Floor



AREA MAP





METROPOLITAN
COMMERCIAL

Claire Blicker

Vice President,
Sales Representative

M. 416.272.5263

W. 416.703.6621 ext. 232

claire.blicker@metcomrealty.com

150 Beverley Street, Suite 1 M5T 1Y5

416.703.6621

www.metcomrealty.com