

**FOR SALE**  
1066 Yonge St  
User/Investment Opportunity



**METROPOLITAN**  
COMMERCIAL

---

## DETAILS

|                      |  |
|----------------------|--|
| <b>Location</b>      | On Yonge Street, south of Roxborough Street East. <a href="#">CLICK HERE</a> |
| <b>Building Area</b> | 2,918 SF   |
| <b>Lot Area</b>      | 2,411 SF   |
| <b>Frontage</b>      | 20.54 Feet   |
| <b>Zoning</b>        | CR 2.5 (c2.0; r2.0) SS2 (x1776)  |
| <b>Asking Price</b>  | <b>\$3,995,000.00</b>  |

---

## FEATURES

- Prime Midtown Location on Yonge Street - Upscale Rosedale, Summerhill, Yorkville
- Future Development Potential
- Unique 3 Storey Storefront with 1 Retail Unit and Four 1-Bedroom Apartments
- High Ceilings, Architectural Detailing, Wood Floors, Walk-Out Rear Patio & Coach House
- 2 Rear Parking Spaces



# CONNECTIVITY



BIKE SCORE OF 77

→ Daily errands can be accomplished on a bike



TRANSIT SCORE OF 87

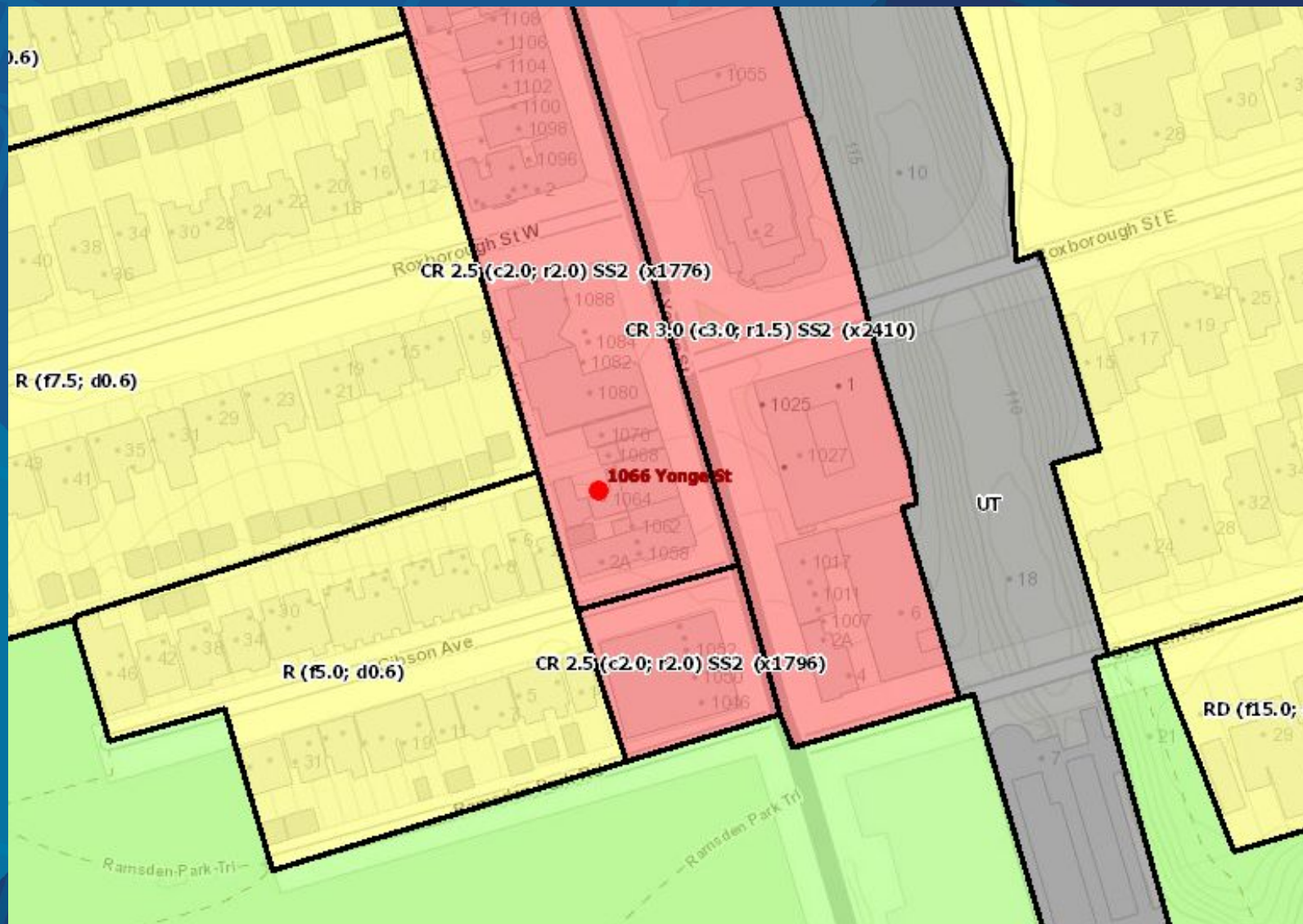
→ World-class public transportation



WALK SCORE OF 98

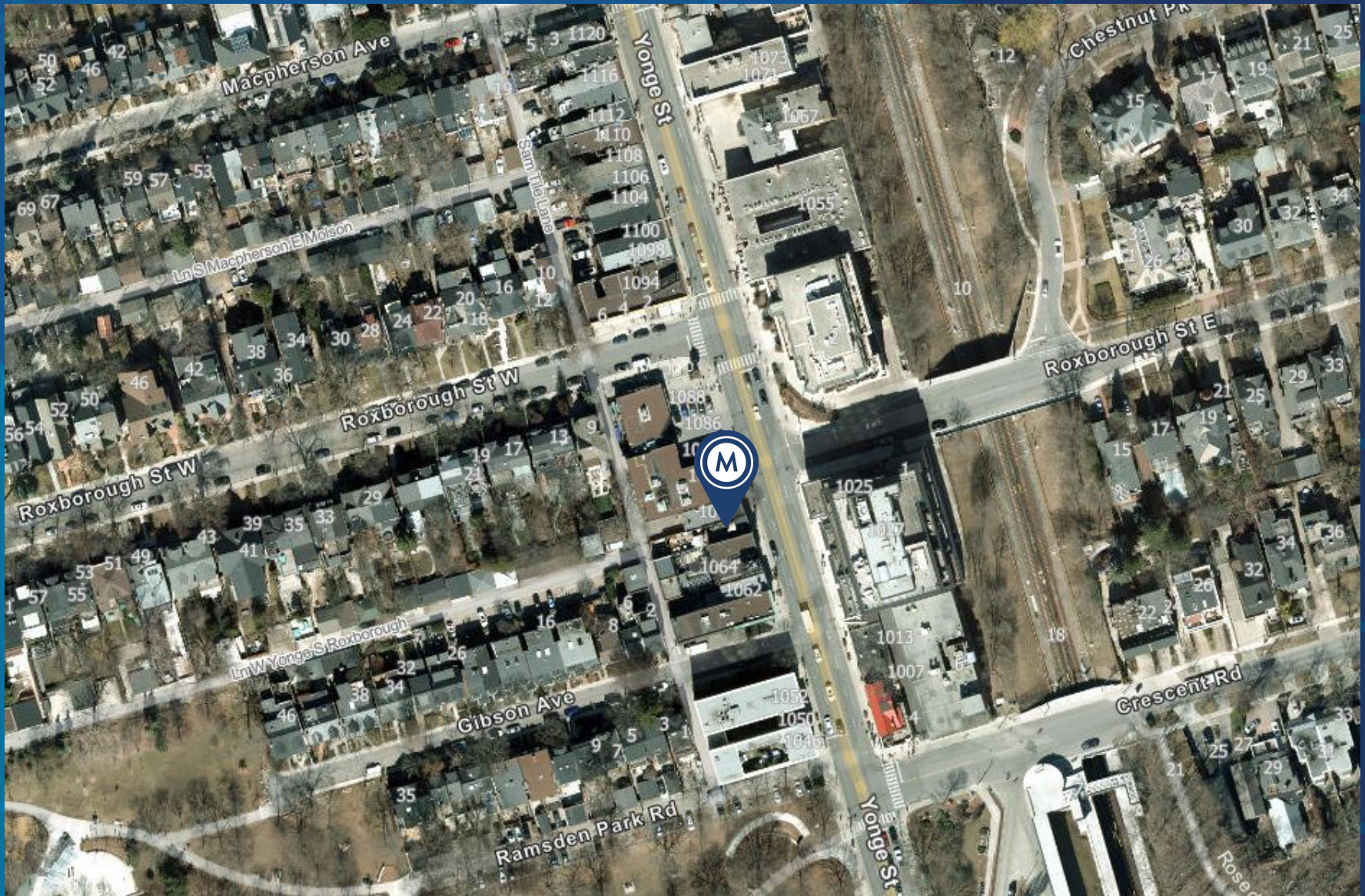
→ Daily errands do not require a car

# ZONING: CR 2.5 (c2.0; r2.0) SS2 (x1776)





# AREA MAP







**METROPOLITAN**  
COMMERCIAL

**Claire Blicker**

Vice President,  
Sales Representative

M. 416.272.5263

W. 416.703.6621 ext. 232

[claire.blicker@metcomrealty.com](mailto:claire.blicker@metcomrealty.com)

150 Beverley Street, Suite 1 M5T 1Y5

416.703.6621

[www.metcomrealty.com](http://www.metcomrealty.com)