

FOR SALE

282 Dupont St

User/Investment Opportunity



MODERN LAUNDRY
& dry cleaning
282 DUPONT 923-8231

SPECIALS
SUITS DRESSES AND UP **15.00**
TROUSERS SKIRTS SWEATERS **7.50** AND UP
SPECIAL Men's Dress SHIRTS **\$3.00** (\$4.00 for More Shirts) \$4.00
Staple/Fully Finished
OPEN DAILY

METROPOLITAN COMMERCIAL REALTY INC., Brokerage



**METROPOLITAN
COMMERCIAL**

DETAILS

Location	On Dupont Street, west of Spadina Ave. CLICK HERE
Building Area	3,140 SF
Lot Area	3,254 SF
Frontage	27.04 Feet
Zoning	Former City of Toronto By-Law No. 438.86
Asking Price	\$2,745,000.00

Both 282 and 284 Dupont must both be sold together

FEATURES

- Prime North Annex Location on Dupont Street
- Future Development Potential
- Unique 2 Storey Storefront with 1 Retail Unit and a 3-Bedroom Apartment
- High Ceilings, rear and front decks, Architectural Detailing, Wood Floors
- Steps from Yorkville, Rosedale, Summerhill, Walking Traffic



METROPOLITAN COMMERCIAL REALTY INC., Brokerage



METROPOLITAN COMMERCIAL REALTY INC., Brokerage

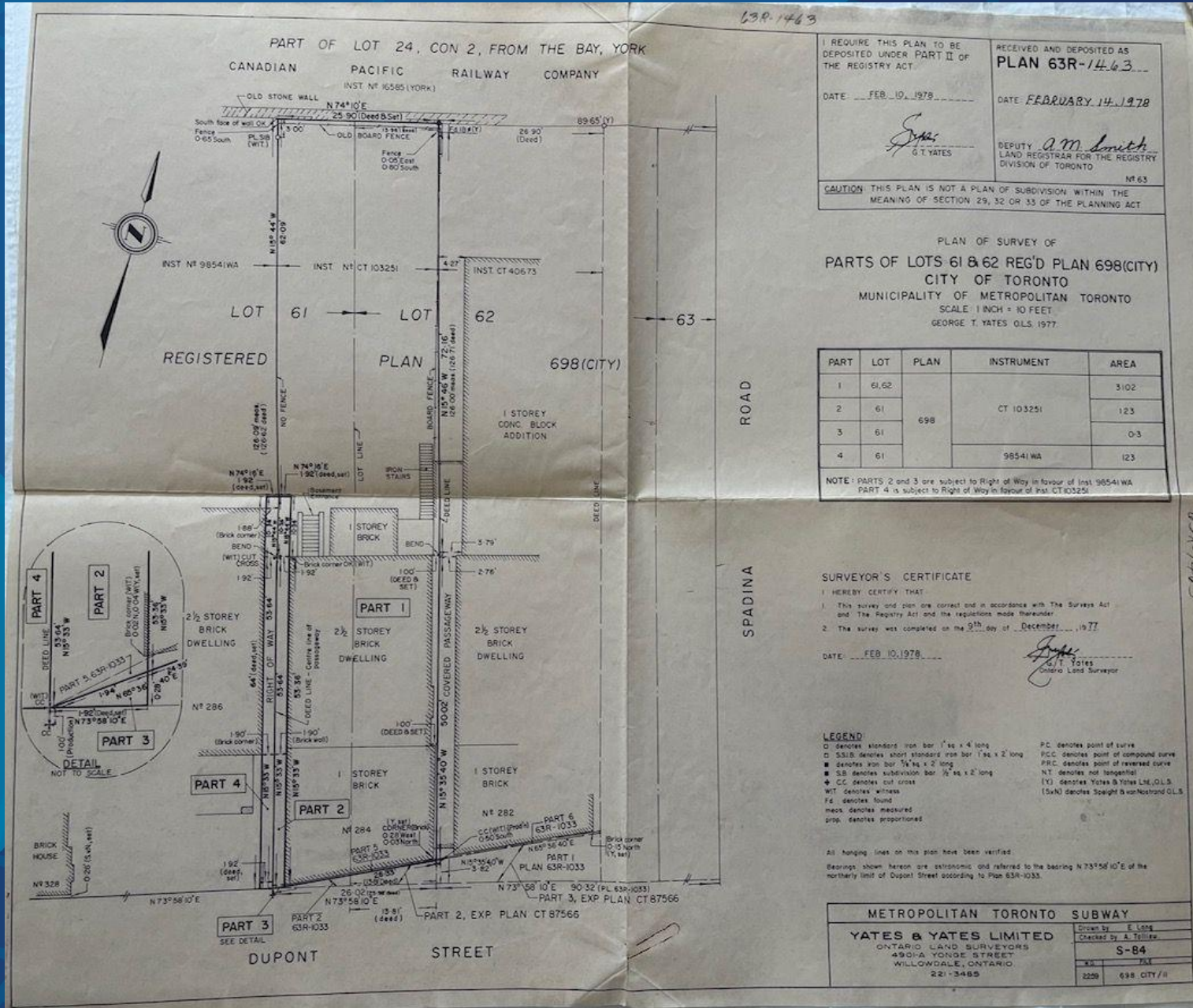


METROPOLITAN COMMERCIAL REALTY INC., Brokerage

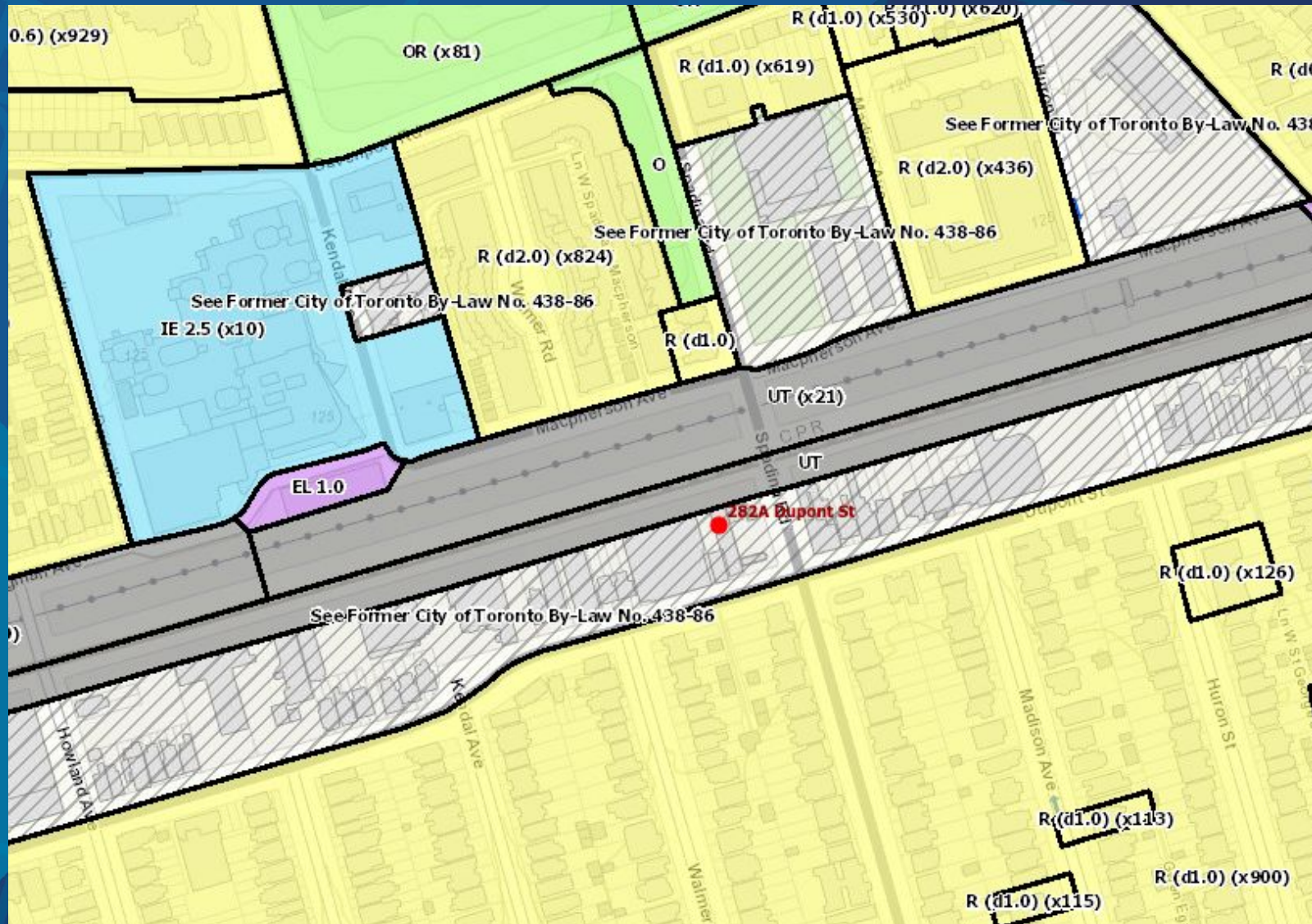


METROPOLITAN COMMERCIAL REALTY INC., Brokerage

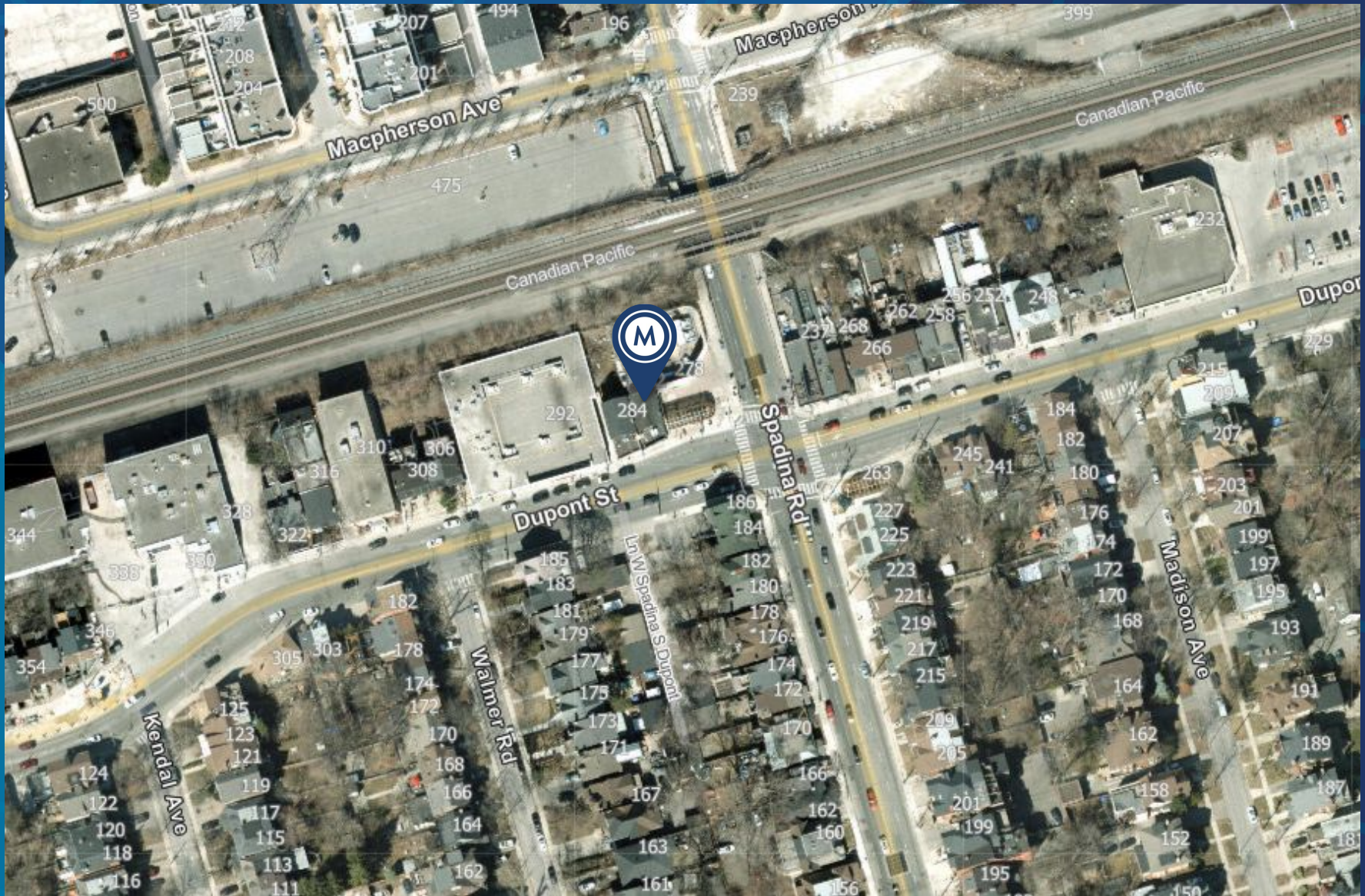
SURVEY



ZONING: (Former City of Toronto By-Law No. 438.86)



AREA MAP



CONNECTIVITY



BIKE SCORE OF 95

→ Daily errands can be accomplished on a bike



TRANSIT SCORE OF 89

- World-class public transportation
- Transit is convenient for most trips



WALK SCORE OF 97

→ Daily errands do not require a car



METROPOLITAN
COMMERCIAL

Claire Blicker

Vice President,
Sales Representative

M. 416.272.5263

W. 416.703.6621 ext. 232

claire.blicker@metcomrealty.com

150 Beverley Street, Suite 1 M5T 1Y5

416.703.6621

www.metcomrealty.com