

**505 - 533 Yonge St, Barrie**  
**DEVELOPMENT SITE FOR SALE**



BEING SOLD UNDER POWER OF SALE



# THE OFFERING



Metropolitan Commercial Realty has been exclusively retained by the mortgagee to offer 505 - 533 Yonge St for sale.

The development application proposes 3 multi-residential buildings with a total of 383 residential units and 469 parking spaces. The application is under review with a second submission filed in September 2023.

## SALES PROCESS

Being sold under power of sale.

## PROPOSED GFA

523,578 SF

## PRICE GFA

\$19

## LAND AREA

6.63 Acres

## ASKING PRICE

**\$9,850,000**

## FINANCING

Financing available.

# PROPERTY OVERVIEW



## PROPERTY NOTES

The property is located on the north-east side of Yonge St in the Painswick North neighborhood of Barrie ON, 4.6 km (8 min) from the nearest Highway 400 entrance ramp.

505-533 Yonge St is a three property residential development assembly with a combined lot size of 288,636.41 square feet. A development application has been submitted to the City of Barrie with a proposed GFA of 523,578 square feet. Application 2 Status Proposed, Under Review.

The site area is 288,636 square feet with 550 feet of frontage on the north-east side of Yonge St with depths of 700 feet on the north border and 314 feet on the south border.

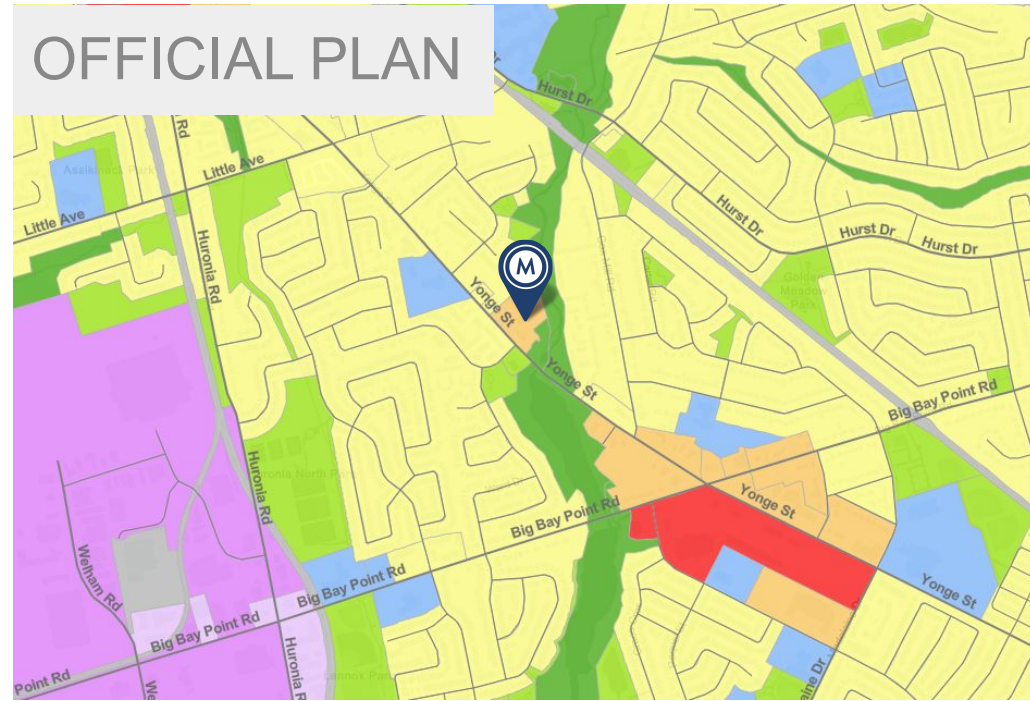
## PROPERTY OVERVIEW

<b>ADDRESS</b>	505 - 533 Yonge St
<b>PINS</b>	589030012, 589030020, 589030021, 589030212
<b>LEGAL DESCRIPTIONS</b>	<b>505 Yonge St:</b> PT BLK C PL 885 INNISFIL PTS 1, 2, 3 & 4, 51R19631; S/T RO1109578; BARRIE <b>511 Yonge St:</b> LT 38 PL 885 INNISFIL; BARRIE <b>515 Yonge St:</b> LOT 39 PLAN 885 INNISFIL CITY OF BARRIE <b>533 Yonge St:</b> PT BLK C & LOT 40 PL 885 PTS 1 & 2 51R31208; BARRIE
<b>DEVELOPMENT TYPE</b>	Residential/Commercial
<b>LAND AREA</b>	6.63 Acres
<b>PROPOSED GFA</b>	523,578 Square Feet
<b>PARKING</b>	469
<b>STOREYS</b>	8, 10, 12
<b>TOTAL UNITS (Res)</b>	384
<b>ZONING</b>	Residential Single Detached Dwelling First Density (R1) / Residential Multiple Dwelling Second Density (RM2)
<b>OFFICIAL PLAN</b>	Medium Density
<b>CITY WARD</b>	8

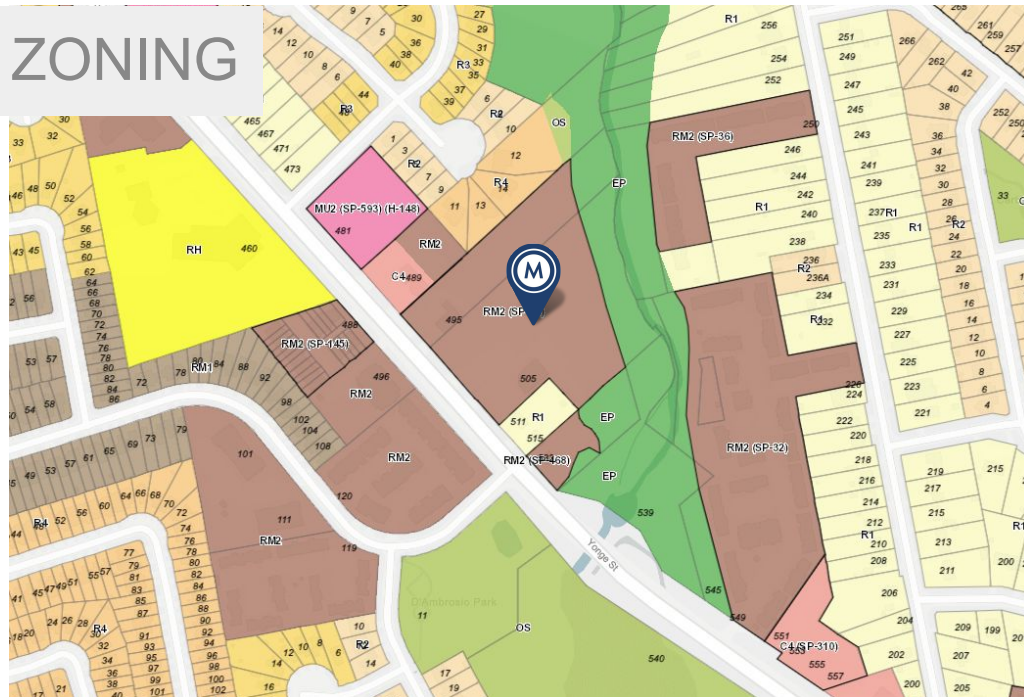
# PLANNING/LAND USE



## OFFICIAL PLAN



## ZONING

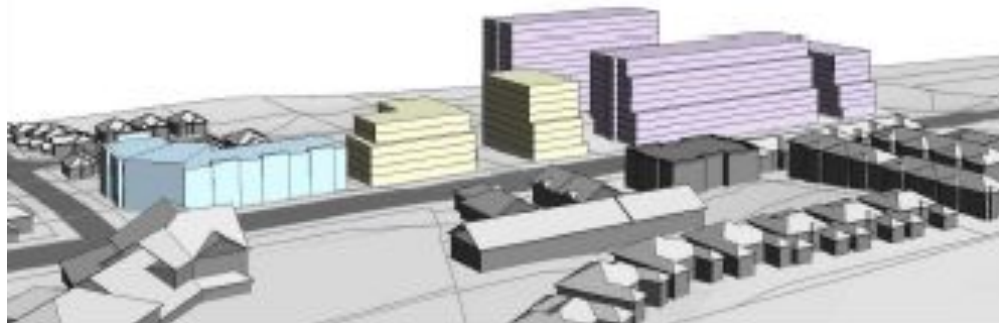
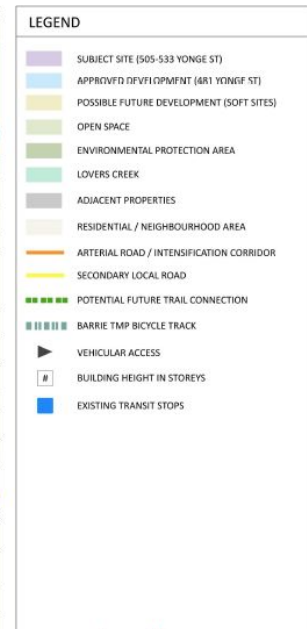
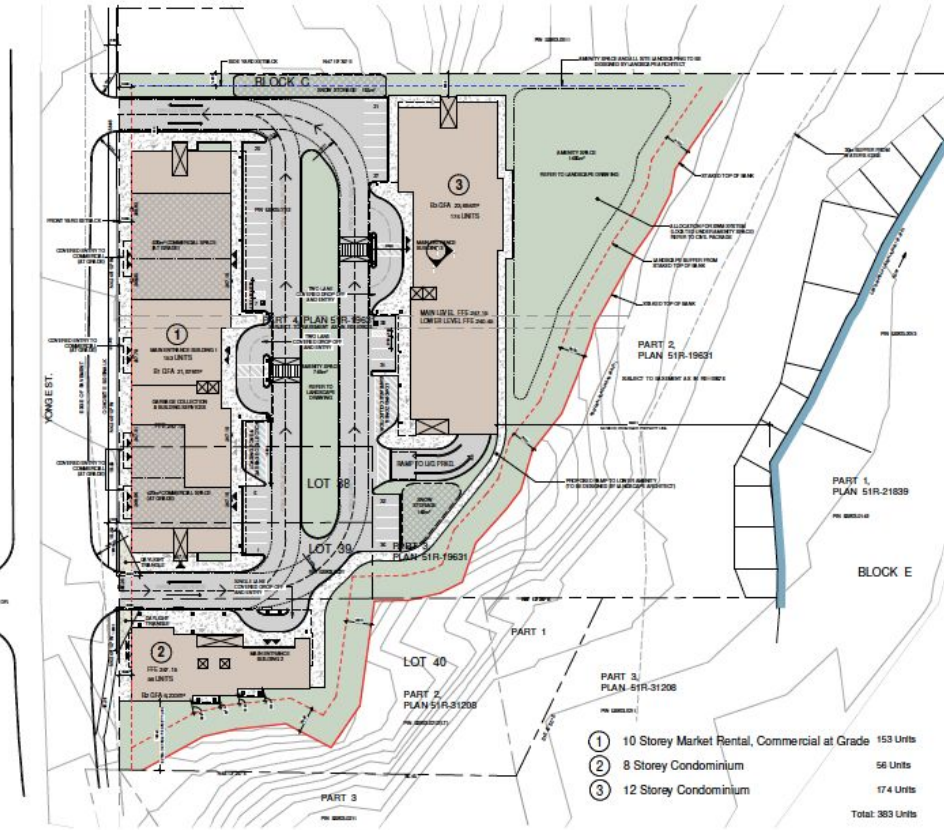


- Convenience Commercial (C5)
- Mixed Use Node (MU1)
- Mixed Use Corridor (MU2)
- Neighbourhood Mixed Use (NMU)
- Residential Hold (RH)
- Residential Single Detached Dwelling First Density (R1)
- Residential Single Detached Dwelling Second Density (R2, R2-WS)
- Residential Single Detached Dwelling Third Density (R3, R3-WS)
- Residential Single Detached Dwelling Fourth Density (R4, R4-WS)
- Neighbourhood Residential (R5)
- Residential Apartment Dwelling First Density (RA1, RA1-1, RA1-2, RA1-3)
- Residential Apartment Dwelling Second Density (RA2, RA2-1, RA2-2)
- Residential Multiple Dwelling First Density (RM1, RM1-SS, RM1-WS)
- Residential Multiple Dwelling Second Density (RM2, RM2-TH, RM2-WS)
- Neighbourhood Multiple Residential (RM3)
- Institutional (I)
- Educational Institutional (I-E, I-E-1)
- Major Institutional (I-M, I-M-1)
- Open Space (OS)
- Environmental Protection Area (EP)

## Official Plan - Land Use

- Neighbourhood Area
- Medium Density
- High Density
- Strategic Employment and Economic District (SEED)
- Commercial District
- Community Hub
- Employment Area - Non Industrial
- Employment Area - Industrial
- Employment Area - Restrictive Industrial
- Natural Heritage System
- Greenspace
- Infrastructure and Utility

# LOCATION



**METROPOLITAN  
COMMERCIAL**



**Built on  
Connections.**

**150 Beverley St | Suite 100  
Toronto, ON | M5T 1Y5  
416.703.6621**

**[www.metcomrealty.com](http://www.metcomrealty.com)**

**Ming Zee  
Broker of Record  
416-703-6621 x222  
[ming.zee@metcomrealty.com](mailto:ming.zee@metcomrealty.com)**

**Nick Nankisoor  
Sales Representative  
416-703-6621 x241  
[nick@metcomrealty.com](mailto:nick@metcomrealty.com)**

Possession of this Opinion of Value, or any copy thereof, does not carry with it the right of publication; nor may it be used for any purpose by anyone without written consent of the author, and in any event with proper qualifications. The author is not required to give testimony or attendance in Court (or any other consultation) by reason of this letter of Opinion with reference to the property in question unless arrangements have been previously made. Metropolitan Commercial Realty Inc., Brokerage \*Sales Representative